

Delivering FIFEplan

Building collaboration

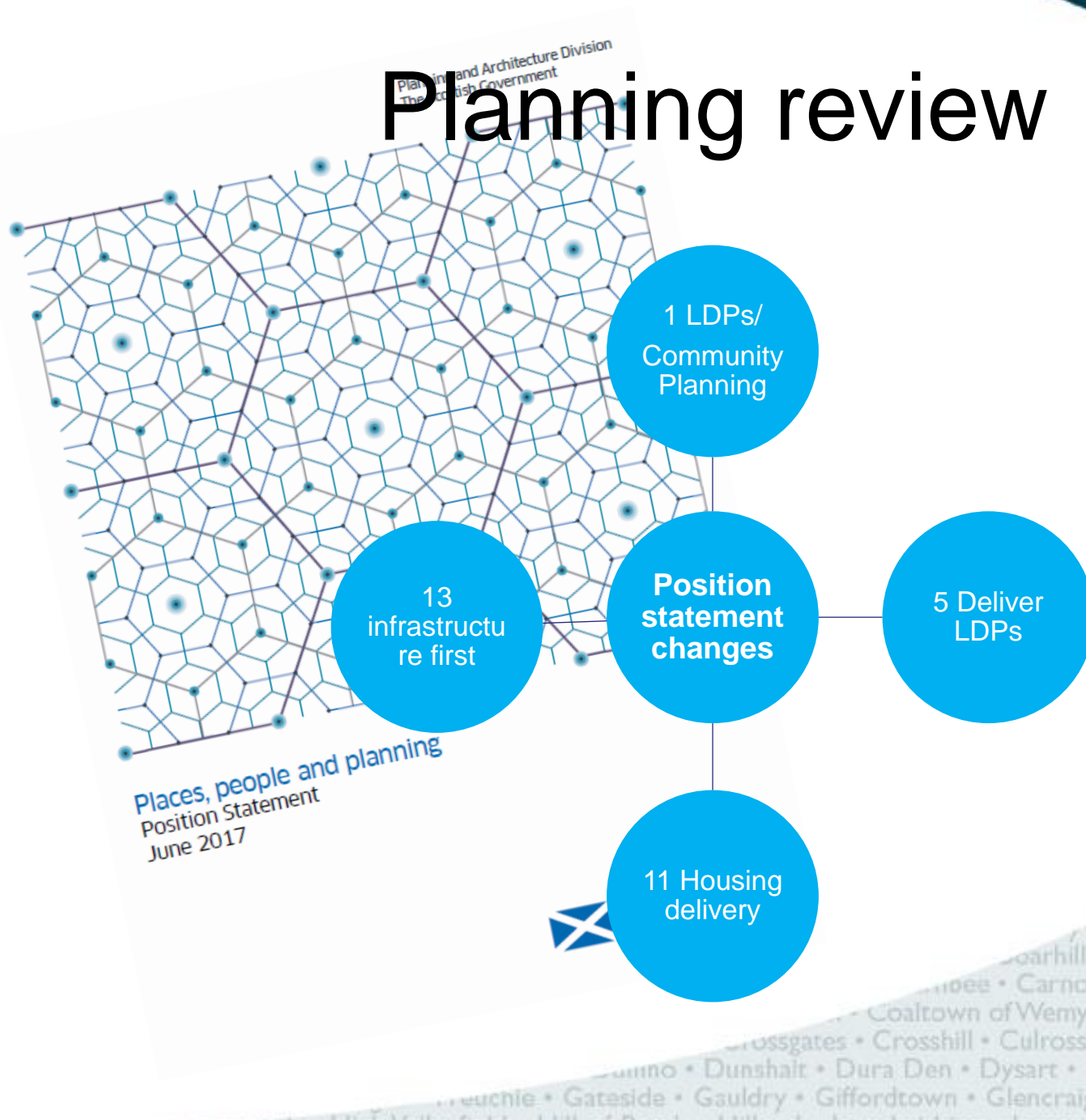
Improvement Service Planning Skills
11 October 2017

Bill Lindsay, Service Manager
Fife Council

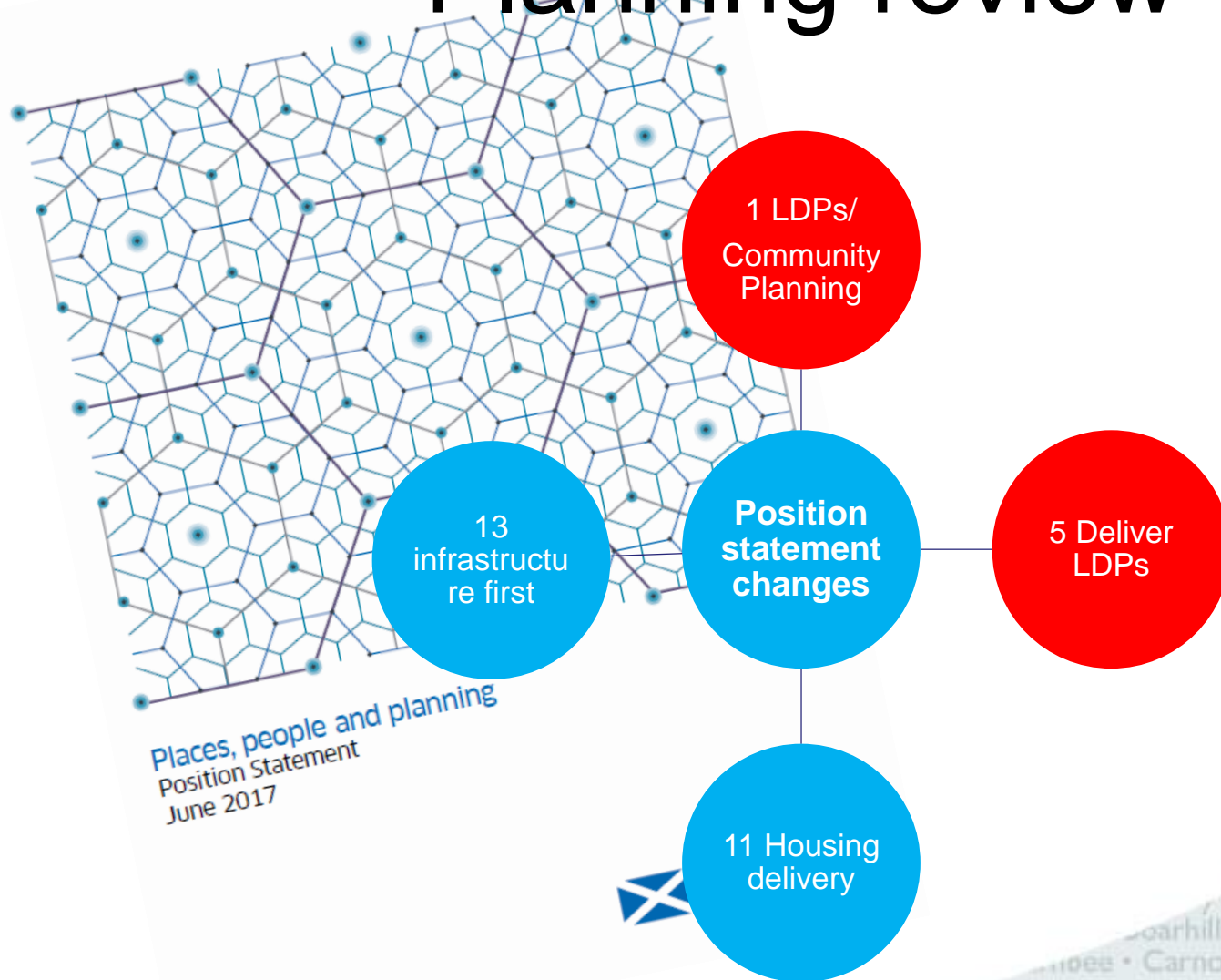
FIFEplan

- Adopted September 2017.
- Started 2012 → 2nd MIR stage following SESplan modification → 15 month examination → Ministers notifying us not to adopt.
- Direction issued - including the need to demonstrate that the LDP has a robust delivery mechanism.

Planning review



Planning review




Where we are in Fife

- LDP has been a ‘planning department’ document.
- Needs to be regarded as a more corporate.
- LOIP – “planning is not visible”.

Fife's issues

- Recognise the importance of strategic growth.
- Planning obligations.
- HfS challenge.
- School estate – capacity, timing, paying for them.
- Transport.

Building the consensus

A blue hexagon with a gradient from dark blue at the top to light blue at the bottom, containing white text.

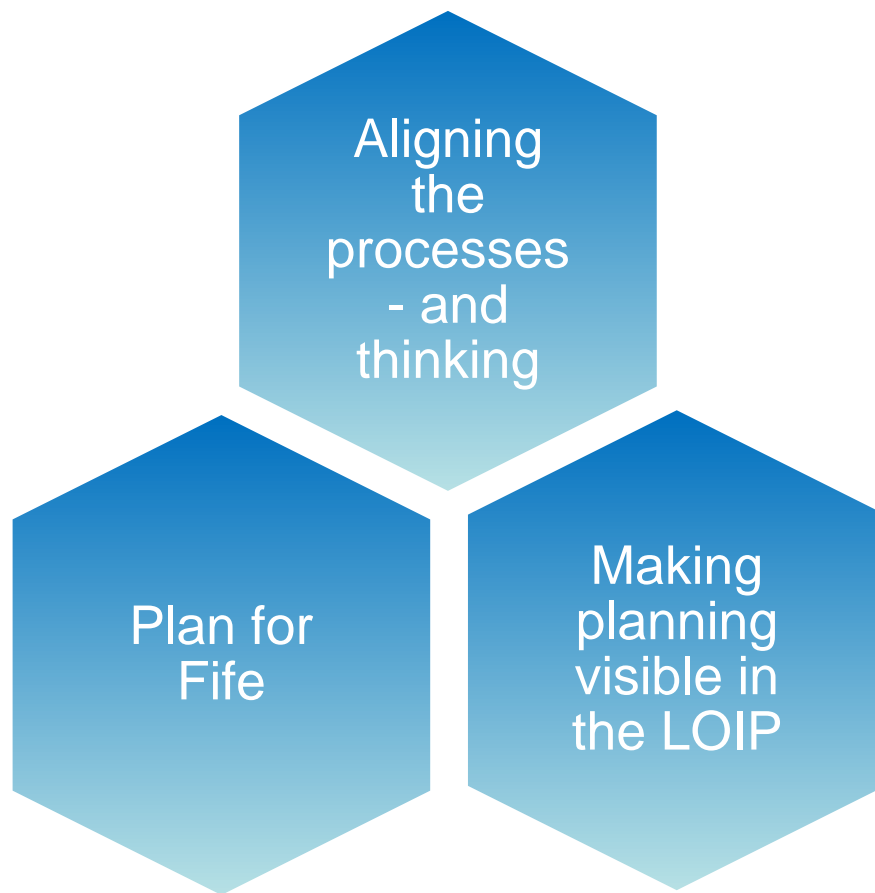
Making
planning
visible in
the LOIP

Building the consensus

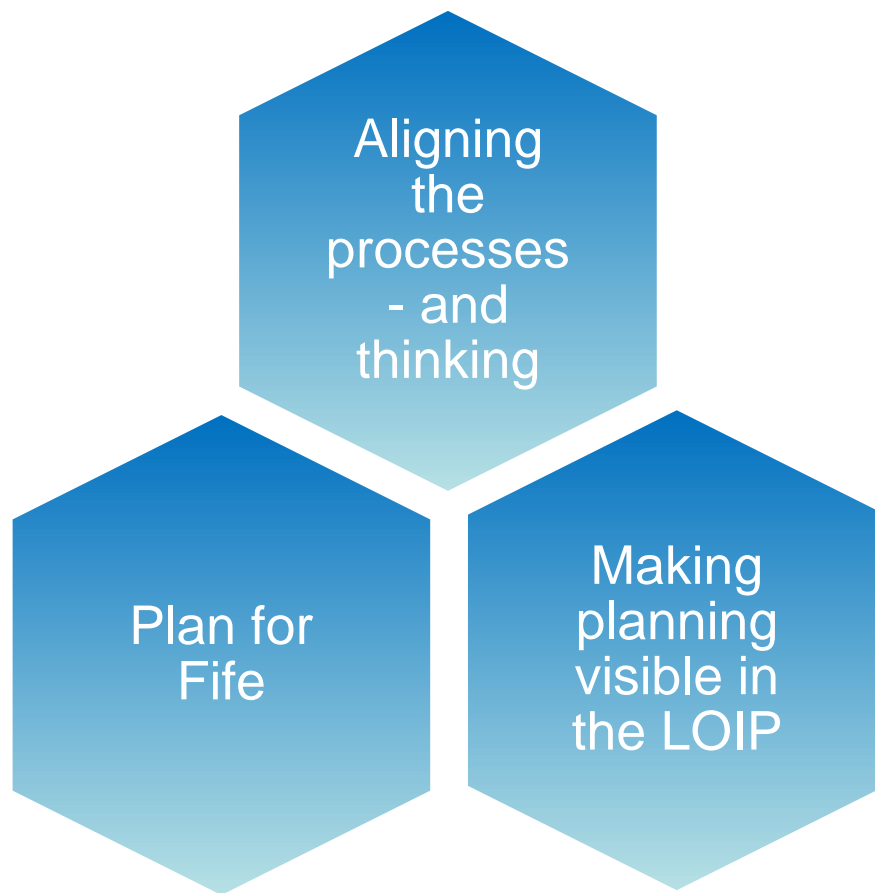
Plan for
Fife

Making
planning
visible in
the LOIP

Building the consensus



Building the consensus



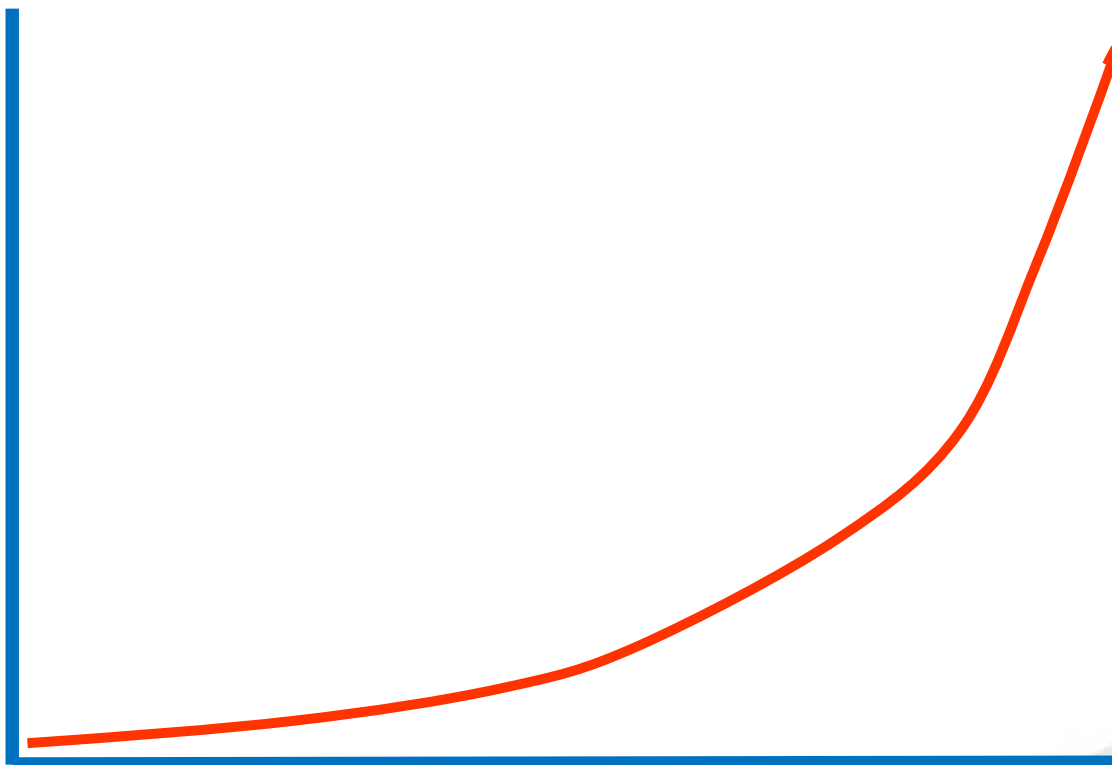
Practical next steps

LDP
Delivery
Programme

Practical next steps

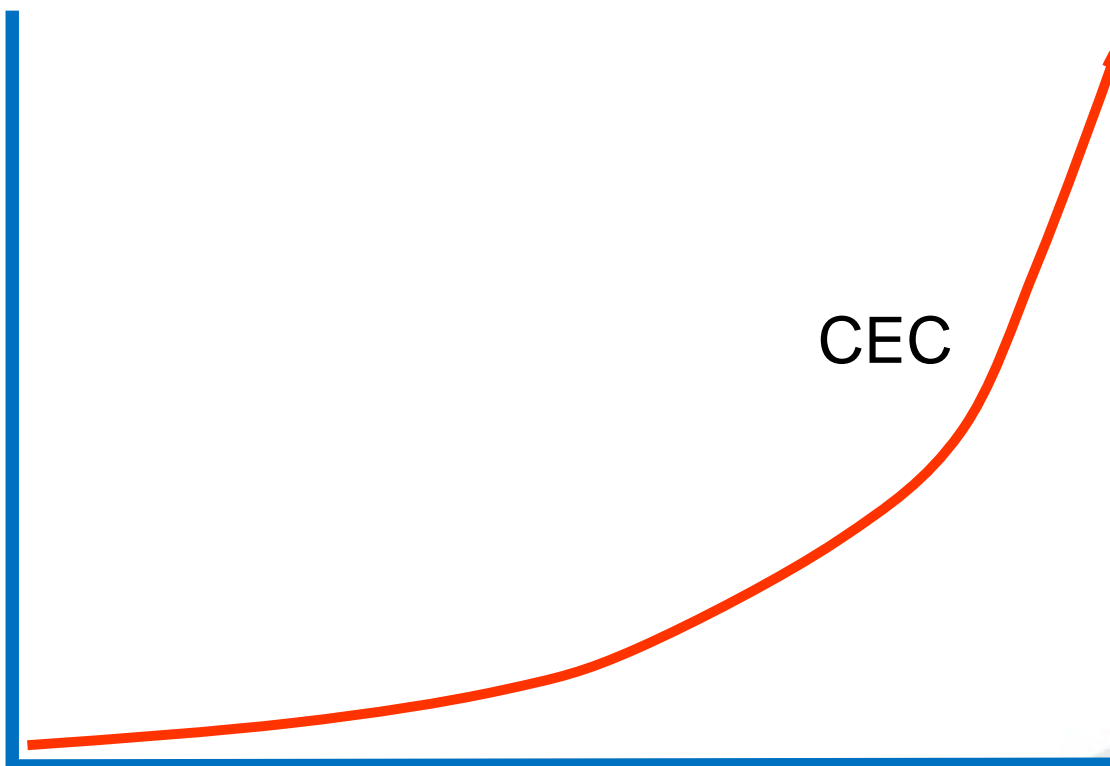


On the curve



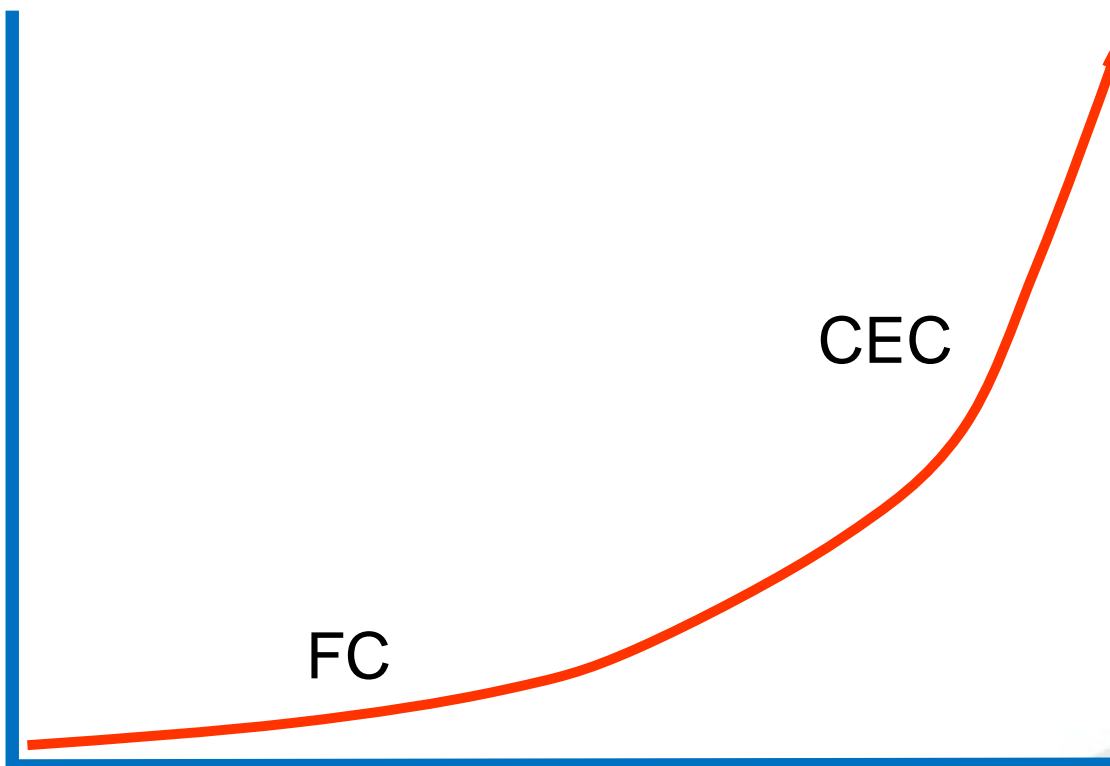
...gt
...ent
...Forg
...n Valley
...nar • Kiln
...no • Ladyb
...e • Low Valleyfi
...Monimail • Moon
...in • Pitlessie • Pitscot
...star • Steelend • Strathkin
...pper Steelend • Wellwood • V
...Auchtertool • Baintown • Balcur
...oarhills • Bonnybank • Boreland • Bow of
...robee • Carnock • Cellardyke • Geres • Chance I
...Coaltown of Wemyss • Colinsburgh • Collessie • Com
...rossgates • Crosshill • Culross • Cults • Cupar • Cupar Muir • Da
...unimo • Dunshalt • Dura Den • Dysart • Earlsferry • East Wemyss • Edentov
...reuchie • Gateside • Gauldry • Giffordtown • Glencaig • Glenrothes • Gowkhal • Grang
...npaths • Milk Valleyfield • Hill of Beath • Hillend • Inverkeithing • Lamertown • Kaly • Kemback • Kenn

On the curve



CEC

On the curve



bill.lindsay@fife.gov.uk

07908 124300