

Clackmannanshire Council Interim Climate Change Strategy 'Strategic Themes and Actions'

Follow up
Place and Wellbeing Assessment
Report



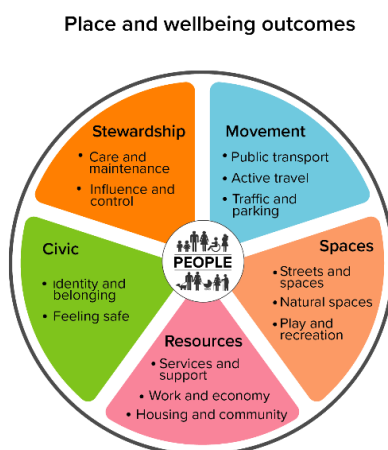
About the report

This is a report of a follow up Place and Wellbeing Assessment held in October 2023 to look at Clackmannanshire Council’s second interim draft Climate Change Strategy ‘Strategic Themes and Actions’.

The initial Place and Wellbeing Assessment for the Council’s first interim draft occurred in July 2022. As mentioned in the initial assessment [report](#), before the assessment took place, the Shaping Places for Wellbeing team and the named Strategy authors agreed that it would be useful to conduct further Place and Wellbeing Assessments at future stages of the document’s development.

This Place and Wellbeing Assessment seeks to leverage the progress made in the second interim draft’s development process, with the aim of generating recommendations that will bolster the Strategic Themes and Actions for the final document and its accompanying Climate Emergency Action Plan.

A Place and Wellbeing Assessment involves a workshop pulling together expertise and perspectives from attendees to consider a plan, policy or decisions impact on delivering a place that enables wellbeing. It asks attendees to consider each of the Place and Wellbeing Outcomes with a lens on who is experiencing the most significant impact from inequality in that place. This paper is the output of one of these assessments.



To get a better understanding about inequalities in the Project Towns, the Shaping Places for Wellbeing Programme gathered data with the support of the Public Health Scotland’s Local Intelligence Support Team (LIST) and the Project Town Steering Group. This data has been used to highlight the key inequality related issues identified within the town, which are impacting on the community’s health and wellbeing. The process for gathering data can be followed through this [guide](#).

The [quantitative data profile](#) for Alloa, at the time of the assessment, highlighted four key areas of focus. These are:

- People experiencing deprivation in Alloa South and East
- Problem substance use involving alcohol
- People experiencing ill health and dying prematurely
- Poverty focusing on children

As part of the Shaping Places for Wellbeing Programme's data exercise, the Community Link Leads in each town have been connecting with local communities, community organisations and practitioners working locally to understand what people who live, work and relax in Alloa need from their place, particularly those most impacted by the inequalities identified above. A summary of what was heard from communities is shared in this infographic in Appendix 3.

Background to the Climate Change Strategy

The second interim draft Climate Change Strategy (the Strategy) is in the final stages of development and once this is informed by public consultation, the final document will replace the [Clackmannanshire Sustainability and Climate Change Strategy](#) adopted in September 2010, then 2016.

Further to approval from council committee on 6th August 2022 the first interim draft was released for public consultation. The second interim draft has been updated to reflect input from the initial Place and Wellbeing Assessment Report, the online public consultation and from local communities through five climate change forums that were held across Clackmannanshire from September 2022 to March 2023. With approval from council committee, it was released for public consultation, closing on 4th October 2023. (Parallel to this, a draft version of the accompanying Regional Energy Masterplan, a joint City Region Deal project between Stirling and Clackmannanshire Councils, was released for public consultation ending on 12th October 2023.)

Support to embed the initial Place and Wellbeing Assessment Reports recommendations has been progressing since August 2022. In summary eight recommendations have been under consideration and this process has yielded valuable insights into translating these recommendations into practical actions, with successes and challenges. Here is an example of how 2 Stewardship Recommendations have been embedded in Appendix 4.

The Strategy aims to set out a framework for action on climate change and achieving targets of reaching net zero emissions by 2040 for the Council's own operation and 2045 for the Clackmannanshire area.

It also outlines why net zero matters and summarises the science behind climate change. In conjunction with this assessment, the Shaping Places for Wellbeing Alloa Team will be offering insights on the Regional Energy Masterplan to further integrate Place and Wellbeing Outcomes across the connected supporting documents.

Links to Shaping Places for Wellbeing Programme

The ambition of the [Shaping Places for Wellbeing Programme](#) is to improve Scotland's wellbeing by reducing the significant inequality in the health of its people. The Programme objective focusses on the evidenced impact that the places where we live, work and relax have on our health and wellbeing. This impact can be positive or negative and the Programme aims to ensure that these intended and unintended consequences are fully considered when we make decisions about a place.

All the evidenced features that a place needs to exhibit for it to have a positive impact on health and wellbeing are set out in the [Place and Wellbeing Outcomes](#). Our objective is to support delivery of the Outcomes. A process used for doing so is a [Place and Wellbeing Assessment](#). This paper is the output of one of these Assessments.

A 'How to Guide' for [Place and Wellbeing Assessments](#) has been designed to support others to undertake their own assessments.

Navigating the document

Read the [Report Summary](#) for an overview of the key themes from the assessment.

The report is outlined by Place and Wellbeing Outcome, with key evidence and research, a summary of the discussion that took place, and the recommendations.

Content: (click on outcome to navigate to page)

[Report Summary](#)

[Movement](#) –

- Active Travel
 - Public Transport
 - Traffic and parking
-

[Space](#) –

- Streets and spaces
 - Natural Space
 - Play and recreation
-

[Resources](#) –

- Services and support
 - Work and economy
 - Housing and community
-

[Civic](#) –

- Identity and belonging
 - Feeling safe
-

[Stewardship](#) –

- Care and maintenance
 - Influence and sense of control
-

Appendix 1: [List of Participants](#)

Appendix 2: [Recommendations Table](#)

Appendix 3: [Qualitative Infographic](#)

Appendix 4: [Example of Recommendation Embedment Tracking](#)

Report Summary

This follow-up assessment of the second interim draft Climate Change Strategy's (the Strategy) Strategic Themes and Actions provided an opportunity to enhance the role of place while identifying its contributions to both overall wellbeing and the reduction of inequality within Alloa South and East and Clackmannanshire. The Strategy's Strategic Themes and Actions contribute well to delivering and supporting many of the aspects of a place that enable the wellbeing of those who live, work and relax in these communities.

Through the discussions under each theme the group identified several ways in which the Strategy's Strategic Themes and Actions will continue to meet the Outcomes following on from the initial Place and Wellbeing Assessment, here are the broad themes that emerged:

Embedment of Place and Wellbeing Outcomes

The Strategy author incorporated eight recommendations from the initial Place and Wellbeing Assessment Report into the document, which already supported a comprehensive development plan. This demonstrates the Strategy's positive reinforcement of raising awareness about wellbeing and the imperative of addressing health-related inequalities.

The working relationship with the Shaping Places for Wellbeing team and the author has contributed to the exchange of connections, alignment of work and enhanced data learning, collection and analysis that feeds into the Strategy.

The Strategy highlights a strong commitment to further enhancing the documents meaningful community engagement methods, which include a transparent, democratic decision-making process. These methods actively involve individuals with lived experience and local knowledge of the area.

It was identified that the overall Strategy has a robust focus on having not only mitigation and adaption around climate change but alludes to a strong ethic around being preventative in nature, driving and nurturing collaboration and partnership working.

It was recognised that the Strategic Themes and Actions detail the plethora of climate change related project work happening in the local area. It was acknowledged that the projects are at various stages of development, and some will be included in the Strategy and supporting documents further stages.

Commitment to accessibility to address inequality

A recurring theme that emerged during the discussions was the necessity of strengthening the commitment to accessibility to address inequality within the Strategy. It was consistently emphasised that the Strategic Themes and Actions should prioritise the development of taking effective and well-planned steps to ensure that everyone, regardless of their background, abilities, or circumstances, can fully participate in and benefit from this Strategy's development and over all delivery. It involves creating an environment or approach that is welcoming, accessible, and fair to all, promoting diversity and equal opportunities.

These actions should also demonstrate clear hooks and connections to promote improved accessibility for both people and biodiversity, linked with wellbeing whilst reducing carbon emissions, promoting the ['The Triple Win'](#).

From a place-based perspective, the Strategic Themes and Actions can do more to support a stronger commitment to accessibility that addresses inequality. It can say more on the positive impact of easy access to sustainable transport, services and spaces across Clackmannanshire, with no physical or systematic boundaries and clear signage and support to sustainable facilities and education.

Supporting Clackmannanshire's trajectory to place based working

The Strategy provides an opportunity to continue to promote place as part of the delivery of its ambition in all partnership and collaborative working. Emphasising the positive benefits certain policy decisions have on local health and wellbeing of local communities while reducing carbon emissions can provide a strong evidence base for challenging decisions by all partners.

Establishing consistent and coherent approaches across strategies and plans and embedding the Place and Wellbeing Outcomes will ensure that place-based working becomes an integral part of Clackmannanshire. This will involve strategies, plans, and proposals that mutually reinforce each other and supportive actions to encourage Clackmannanshire Council to establish governance around a 'Place' directorate.

Summary of Discussion and Recommendations by Place and Wellbeing Outcome

Movement

Active Travel

Everyone can:

- easily move around using good-quality, accessible, well-maintained, and safe segregated wheeling, walking, and cycling routes and access secure bike parking.
- wheel, walk and cycle through routes that connect homes, destinations, and public transport, are segregated from, and prioritised above, motorised traffic and are part of a local green network.

Evidence and research:

- Health benefits of active travel, such as increased physical activity levels, will vary in different groups.¹
- Walking or cycling to school helps children achieve a healthy weight and the beneficial effects may be greater for children from deprived areas.²
- Protected bike lanes and secure bike parking increases diversity and inclusion.³³
- Safety is a key barrier to increasing women's use of active travel.⁴⁴

Climate lens prompt

- *What would it take for people to move around in ways that avoid using petrol and diesel (for example walking, cycling, electric vehicles)?⁵*

¹ [Public Health Scotland, Evidence behind Place Standard Tool and Place and Wellbeing Outcomes](#)

² [Public Health Scotland, Evidence behind Place Standard Tool and Place and Wellbeing Outcomes](#)

³ [Public Health Scotland, Evidence behind Place Standard Tool and Place and Wellbeing Outcomes](#)

⁴ [Public Health Scotland, Evidence behind Place Standard Tool and Place and Wellbeing Outcomes](#)

⁵ [Place Standard Tool Place Standard Lens](#)

Summary of discussion:

The group felt the Strategic Themes and Actions contribute well towards this Outcome. It features heavily throughout the document, it references the sustainable transport hierarchy, local active travel work, hybrid working reducing the need to travel and programmes supporting behaviour change. There is good emphasis on the benefits of all modes of active travel and effective use of data around the relationship between carbon emissions and poverty showing that those living in poverty are more likely to be walking, cycling, using public transport. The overall Strategy supports the positive action in Clackmannanshire towards making it as accessible as possible. It also aims to identify any gaps in existing networks and aims to nurture links and alignment with other complimentary strategic plans.

It was agreed to include more information in the Strategic Themes and Actions about the active travel related efforts taking place across various sectors in Clackmannanshire, especially those aligned with Place and Wellbeing Outcomes. This will emphasise the interconnected nature of active travel, public transport, and traffic and parking initiatives, highlighting their links to behaviour change.

Including clear messaging about the education and support needed for positive behaviour change around active travel will make a real difference to people and place. It is key to further recognise the role of local schools and climate related projects in the area.

Recommendations to consider:

1. In the Strategic Themes and Actions make it explicit that there is action needed to improve local accessibility to active travel needs. Provide hooks to encourage stakeholders to identify any gaps in existing networks and show clear links and alignment with other strategic plans to move forward with this.
2. In the Strategic Themes and Action include more information about the active travel related work across sectors in Clackmannanshire that is considering the Place and Wellbeing Outcomes e.g., 'Feeling Safe' and the input of lighting on cycle path Alva to Menstrie and 'Work and Economy' and the local employability programmes from Clackmannanshire Council and Clackmannanshire Regeneration Trust.

3. In the Strategy and Strategic Themes and Actions include text to further recognise the role of local schools, [Alloa Active Travel Hub](#) , [Forth Environment Link](#) and other local third sector initiatives like [Resonate Together](#) in promoting active travel.
4. As a hook, in the Strategic Themes and Actions include clear messaging about the education and support needed for positive behaviour change around active travel that will make a real difference to people and place.
5. In the Strategy include more explicit information of the [Triple Win](#) showing more information on place-based approaches around sustainability.
6. To promote the multi- disciplinary approach required to deliver on the Place and Wellbeing Outcomes include clear links in the Strategic Themes and Outcomes to strategic policy, plans across sectors e.g., NHS Forth Valley Health and Strategic Plans, Clackmannanshire Council Local Development Plan, and Local Outcomes Improvement Plan, [Clackmannanshire and Stirling Health and Social Care Partnership Strategic Commissioning Plan](#) and [NHS Forth Valley Climate Change Strategy](#).

Public Transport

Everyone has access to a sustainable, affordable, accessible, available, appropriate, and safe public transport service.

Evidence and research:

- Public transport use has the potential to improve access to services and facilities and connect communities. ⁶
- Certain groups in the population are disproportionately affected by the lack of available and affordable public transport.⁷
- Public transport has the potential to encourage active travel. ⁸
- Public transport should be accessible, available, affordable and appropriate. ⁹
- Public transport has the potential to reduce carbon emissions.¹⁰

⁶ [Public Health Scotland, Evidence behind Place Standard Tool and Place and Wellbeing Outcomes](#)

⁷ [Public Health Scotland, Evidence behind Place Standard Tool and Place and Wellbeing Outcomes](#)

⁸ [Public Health Scotland, Evidence behind Place Standard Tool and Place and Wellbeing Outcomes](#)

⁹ [Public Health Scotland, Evidence behind Place Standard Tool and Place and Wellbeing Outcomes](#)

¹⁰ Patterson R, Webb E, Hone T, et al. Associations of Public Transportation Use with Cardiometabolic Health: A Systematic Review and Meta-Analysis. *American Journal of Epidemiology* 2019 188(4):785-795
Aether Evidence Review of the Potential Wider Impacts of Climate Change Mitigation options: Transport sector. Report to the Scottish Government 2017 Available from

Climate Lens prompt

- *Are there delays or cancellations due to the weather? What do people do?*
- *How could we make it more comfortable to use public transport - waiting for it and travelling on it - in any weather?¹¹*

Summary of discussion:

The group agreed that the Strategic Themes and Actions aim to enhance the accessibility of public transport and emphasises its role in reducing carbon emissions. However, it is crucial to incorporate the perspectives of the most vulnerable individuals across Clackmannanshire, who frequently face challenges and safety concerns when using public transport to shape the Strategic Themes and Actions.

Accessibility of public transport should be explored more within the Strategic Themes and Actions and remainder of the Strategy. The group agreed to recommend including actions that focus on ensuring that everyone feels safe and welcomed on buses. One idea put forward was the use of digital climate solutions as a mechanism to support more accessible transport timetabling. This approach aims to provide additional options for connecting key journeys within the public transport network, ultimately enhancing accessibility for a broader audience.

The Strategic Themes and Actions mention the importance on delivering 20-Minute Neighbourhoods while being cognisant of how climate change impacts on those who use public transport and active travel. However, there should be more connections to other strategies and plans to emphasise the benefits of the Triple Win. The group agreed that the social aspect of public transport is important in a place as well as the functional benefits. Both should be explained.

Learning from local groups who are guiding sustainable work will enable consistent messaging and an amplification of the Strategy Themes and Actions at a local level.

<https://www.gov.scot/binaries/content/documents/govscot/publications/research-and-analysis/2017/01/evidence-review-potential-wider-impacts-climate-change-mitigation-options-transport/documents/00513155-pdf/00513155-pdf/govscot%3Adocument/00513155.pdf>

¹¹ [Place Standard Tool Place Standard Lens](#)

Recommendations to consider:

7. In the Strategic Themes and Actions detail more actions to improve the range of perspectives needed to guide how the accessibility of public sustainable transport is developed to include most vulnerable across Alloa and Clackmannanshire.
8. In the Strategic Themes and Actions include clear messaging about the links to the accessibility of active travel and public transport supporting people to engage for a social purpose, not only for a functional purpose. Link in with Dial-a- Journey to learn from their data and approach to this.
9. In the Strategy show clear learning from and connection to local groups like the Forth Valley Connectivity Commission and existing organisations who are guiding sustainable work and currently operating in the Clackmannanshire and Forth Valley areas.
10. In the Strategic Themes and Actions show more detailed information on the other Clackmannanshire Council strategies and plans that are directly related to sustainable development e.g., Public Transport Strategy, Active Travel work. Outline the benefits of the role of Place and Wellbeing Assessments would have during their review.
11. In the Strategic Themes and Actions show learning from digital climate solutions mechanism to support transport timetabling accessibility and explore links with Clackmannanshire Council Digital Strategy.

Traffic and parking

Everyone can benefit from:

- reducing traffic and traffic speeds in the community.
- traffic management and design, where traffic and car parking do not dominate or prevent other uses of space and car parking is prioritised for those who don't have other options.

Evidence and research:

- Lack of suitable parking has the potential to affect health.¹²
- Parking should be prioritised for people who don't have other options.¹³
- Motorised transport has the potential to increase air and noise pollution and greenhouse gases.¹⁴
- Motorised transport can increase risk of accidental injury and disrupt communities.¹⁵
- Motorised transport has the potential to reduce levels of physical activity and social interactions.¹⁶

Climate lens prompt

- *How can we shape the location so that cars are not the most convenient choice, especially for short journeys? This may involve changing where parking is sited, traffic free spaces, e-bikes, dedicated active travel routes etc.*
- *Is there parking available for bicycles, and electric bikes, buggies and electric cars?*
- *How could walking and cycling be made a more attractive, safe, and appealing option?¹⁷*

¹² [Public Health Scotland, Evidence behind Place Standard Tool and Place and Wellbeing Outcomes](#)

¹³ [Public Health Scotland, Evidence behind Place Standard Tool and Place and Wellbeing Outcomes](#)

¹⁴ Transport Scotland. National Transport Strategy. Edinburgh; Transport Scotland; 2020. www.transport.gov.scot/our-approach/national-transport-strategy/

¹⁵ [Public Health Scotland, Evidence behind Place Standard Tool and Place and Wellbeing Outcomes](#)

¹⁶ [Public Health Scotland, Evidence behind Place Standard Tool and Place and Wellbeing Outcomes](#)

¹⁷ [Place Standard Tool Place Standard Lens](#)

Summary of discussion:

The group agreed that there is a need for more information and promotion of the positive impacts of Low Traffic Neighbourhoods in the Strategic Themes and Actions. Additionally, they should include more detail on the need for better infrastructure for children and families to walk and cycle by reducing the amount of traffic in an area, thereby encouraging the use of that infrastructure. Learning from the progress of Low Traffic neighbourhoods from across Scotland could be investigated and promoted and clarifying that meeting this outcome requires having “less cars” not “no cars” and there are a variety of different options to support everyone.

There was acknowledgement around the need to reduce the number and speed of cars on the high street in Alloa. There should be clearer links in the Strategic Themes and Actions to the opportunity for positive contributions from the forthcoming Alloa Town Centre masterplan and the Council’s Local Development Plan.

Recommendations to consider:

12. In the Strategic Themes and Actions include more messaging to show the importance of improving infrastructure around schools and communities. This will encourage walking and wheeling that is safe and accessible and the means to achieving this being Low Traffic neighbourhoods around schools. Show links to the Alloa Town Masterplan and Clackmannanshire Local Development Plan.
13. In the Strategic Themes and Actions show learning from the impact of other Low Traffic neighbourhoods across Scotland e.g., [A Guide to Low Traffic Neighbourhoods](#).

Space

Streets and spaces

Everyone can access:

- buildings, streets and public spaces that create an attractive place to use, enjoy and interact with others.
- streets and spaces that are well-connected, well-designed and maintained, providing multiple functions and amenities to meet the varying needs of different population groups.

Evidence and research:

- Streets that are connected can create walkable neighbourhoods, that have the potential to increase physical activity and social interactions.¹⁸
- Navigable streets and spaces allow people to move around easily, safely and access facilities and services.¹⁹
- Walkable neighbourhoods can provide opportunities to socially interact.²⁰
- Inadequate or poor spaces can lead to reduced social interactions.²¹

Climate lens prompt

- *Where could streets and spaces be 'greened' to improve air quality, grow food, provide natural flood management, and absorb emissions?*
- *How can we enhance streets and spaces to make them an appealing place to linger and socialise, and carry out daily activities on foot?*²²

¹⁸ [Public Health Scotland, Evidence behind Place Standard Tool and Place and Wellbeing Outcomes](#)

¹⁹ [Public Health Scotland, Evidence behind Place Standard Tool and Place and Wellbeing Outcomes](#)

²⁰ Carmona M. Place value: place quality and its impact on health, social, economic and environmental outcomes. *Journal of Urban Design* 2019;24:1–48.

²¹ Barton H. Land use planning and health and well-being. *Land Use Policy* 2009 26:115–123.

²² [Place Standard Tool Place Standard Lens](#)

Summary of discussion:

It was acknowledged that more could be included in the Strategic Themes and Actions to promote everyone having access to better connected streets and spaces that provide for multiple functions including local biodiversity needs.

The third sector frequently uses Alloa's streets and spaces for events in Clackmannanshire. To better accommodate the needs of the service users and volunteers, there is a need for street and service designs that include features like food growing spaces, additional benches, and public toilets located near safe and convenient natural spots. This approach would build on the success of well-placed benches and the Active Travel Hub in Alloa Town Centre.

The group agreed on the importance of providing more visible and clear funding information for the third sector, particularly those identifying unmet needs related to spaces. This would serve as a reference point for community groups and organisations, encouraging them to actively seek funding opportunities because such information is outlined in the Strategy. This will accumulate valuable contribution towards delivery of the Strategic Themes and Actions and possibly bolster the success of public sector funding applications.

There was discussion about the need to include information around access to streets and spaces in relation to the Food Growing and Allotment Strategy's future aims and objectives.

Recommendations to consider:

14. In the Strategic Themes and Actions insert more text that explicitly describes how streets and spaces including School occupied land and natural spaces are not separate entities and that they are interlinked. This should reference the same messaging in the Local Development Plan and Pollinator Strategies.
15. In the Strategy promote the need for designing streets and spaces around the accessibility needs of local people and biodiversity activity.
16. In the Strategy comprise a section about sustainability funding signposting as a hook for community groups and organisations to refer to and are encouraged to seek funding because it is detailed in the Strategy.
17. In the Strategic Themes and Actions incorporate information around how communities can access land including streets and spaces and link this to the Food Growing and Allotment Strategies.

Natural Space

Everyone can:

- access good-quality natural spaces that support biodiversity and are well-connected, well-designed, safe, and maintained, providing multiple functions and amenities to meet the varying needs of different population groups.
- be protected from environmental hazards including air/water/soil pollution or the risk of flooding.
- access community food growing opportunities and prime quality agricultural land is protected.

Evidence and research:

- Experts hypothesise that natural spaces can provide a sense of character and distinctiveness to a place. Natural spaces can encourage social interactions and a sense of community and belonging.²³
- There are wider environmental benefits to increasing natural space which can protect population health.²⁴
- The type, size, quantity, quality, accessibility and proximity of natural spaces to where people live can influence whether infrastructures and spaces are used.²⁵

Climate lens prompt

²³ [Public Health Scotland, Evidence behind Place Standard Tool and Place and Wellbeing Outcomes](#)

²⁴ Salmond JA, Tadak M, Vardoulakis S, et al. Health and climate related ecosystem services provided by street trees in the urban environment. *Environmental Health* 2016 15 (Suppl 1): 36

White MP, Alcock I, Grellier J, et al. Spending at least 120 minutes a week in nature is associated with good health and wellbeing. *Nature Scientific Reports* 2019 9: 7730

²⁵ Smith N, Georgiou M, King AC, et al. Urban blue spaces and human health: A systematic review and meta-analysis of quantitative studies. *Cities* 2021 119 103413

Lovell R, Depledge M, Maxwell S. Health and the natural environment: a review of evidence, policy, practice and opportunities for the future. Department for Environment, Food and Rural Affairs; 2018.

<https://ore.exeter.ac.uk/repository/handle/10871/36923>

- *Can existing natural spaces be managed and used to better absorb carbon from the atmosphere, for example through tree planting, peatland restoration, wetland creation?*²⁶

Summary of discussion:

The group agreed that the Strategic Themes and Actions acknowledges the links between Natural Spaces to health and wellbeing but that these need to be more explicit to show the impact of this Outcome on people and the climate. There should be a clearer explanation of the benefits of improved accessibility to natural spaces, especially for those without easy access. This would contribute to establishing a more effective referral process to outdoor treatment options from local health service public and third sector work.

More direction in the Strategic Themes and Actions towards addressing the need for tackling 'eco anxiety' which has been mentioned as an issue for local young people during Climate Forum discussions, is needed. As part of this messaging, it should be acknowledged that when services are improving accessibility, social and physical factors should be considered.

While there is significant emphasis on carbon storage and biodiversity, it is essential to explicitly acknowledge the council's obligation to develop Nature Networks. These networks not only contribute to local biodiversity but also offer the potential to establish more connected habitats.

In addition to this, there should be a more explicit direction regarding the specific biodiversity enhancements the council intends to achieve, particularly related to pollinator corridors. These efforts should align with the objectives of addressing local housing needs as outlined in the Local Development Plan and Wellbeing Local Outcomes Improvement Plan, benefitting the local communities.

There was discussion about the key role of the Countryside Ranger Service. The group agreed that there is a need for more text to describe the current commitment to working with inequality groups and the role of incorporating even more cultural activity in natural spaces as a tool to engage about climate change.

²⁶ [Place Standard Tool Place Standard Lens](#)

Recommendations to consider:

18. In the Strategic Themes and Actions incorporate more messaging about the links between Natural Spaces to health and wellbeing to show that more accessible, safe, available and protected quality green spaces have a positive wellbeing effect on people and climate. This will help create a better referral route for local mental health services and Community Link Workers who are based in local GP surgeries and signpost eco school's framework to support schools.
19. In the Strategic Themes and Action encompass messaging on the social factors of (natural space) accessibility as well as the physical factor and show commitment to tackling 'eco anxiety.'
20. In the Strategy show an explicit acknowledgement of the council requirement to produce Nature Networks and show a clearer steer to what biodiversity enhancements the council aim to deliver tying in with pollinator corridors, Local Development Plan and Wellbeing Local Outcomes Improvement Plan.
21. In the Strategic Themes and Actions incorporate explicit promotion of the key role of Countryside Rangers and third sector organisations in local natural space, their commitment to inequality groups and incorporating cultural activity in natural spaces as a tool to engage about climate change.

Play and recreation

Everyone can access a range of high quality, safe, well-maintained, accessible places with opportunities for play and recreation to meet the varying needs of different population groups and the community itself.

Evidence and research:

- Undertaking play or recreation in natural spaces and accessing them through active travel has benefits for the environment.²⁷
- Perceptions of poor design, quality and safety can lead to children and young people not using the play and recreation spaces.²⁸
- Play and recreation is beneficial for the health of both adults and children through the encouragement of physical activity and social interactions.²⁹

Climate lens prompt

- *About how people play and spend their time in different weather conditions*
- *Does the weather ever lead to overcrowding of spaces or facilities (e.g., outdoor spaces in hot weather, indoor facilities in rain or cold)?³⁰*

Summary of discussion:

It was agreed that the Strategic Themes and Actions link in well with the importance of local food growing and link well to the initiative Clacks Good Food but there is still more detail to be fleshed out and included. The group agreed that this will likely happen with the development of the Food Growing Strategy and Allotment Strategy with the support of Clacks Good Food but that it is important to explain in the Strategic Themes and Actions the multidisciplinary approaches and benefits to local food growing.

The group agreed that more clarity is needed around the role of Community Asset Transfer as there are opportunities within the council to support the development of new

²⁷ Transport Scotland. National Transport Strategy. Edinburgh; Transport Scotland; 2020.

www.transport.gov.scot/our-approach/national-transport-strategy/

²⁸ [Public Health Scotland, Evidence behind Place Standard Tool and Place and Wellbeing Outcomes](#)

²⁹ [Public Health Scotland, Evidence behind Place Standard Tool and Place and Wellbeing Outcomes](#)

³⁰ [Place Standard Tool Place Standard Lens](#)

community gardening and other activities on council land. Building on the Regional Energy Masterplan, there is an opportunity to incorporate details about the 'Forthbank' project, which complements the Triple Win approach. This inclusion will provide further information about the City Region Deal and the Scottish International Environmental Centre's investment and innovation initiatives.

During the discussion, the idea arose to consider using qualitative data in the Strategic Themes and Actions to explore how some children and families perceive a lack of ownership over certain spaces within playgrounds in Alloa and Clackmannanshire. There should be more exploration of creative community engagement activities using play and recreational spaces as a way of tackling climate change and inequality in the area.

Recommendations to consider:

22. In the Strategic Themes and Actions integrate an explicit explanation that Food Growing does not happen in isolation and that there are strong links to show between the Pollinator Strategy and other nature and Wellbeing Economic Strategy delivery work.
23. In the Strategy include a section around the role of community asset transfer, as there are opportunities to support the development of new community gardening on council land, with a steer towards making the process attractive and accessible.
24. In the Strategy showcase the exemplary work of the 'Forth Bank' project detailed in the Regional Energy Masterplan supporting more education about the Stirling and Clackmannanshire City Region Deal and the Alloa based Scottish International Environmental Centre investment and innovation initiative.
25. In the Strategic Themes and Actions Show learning from climate neighbourhood projects like [Glasgow Liveable Neighbourhoods Toolkit](#) and [Creative Climate Futures](#) in relation to exploring creative climate change engagement activities with communities together to use play and recreational spaces as a way of tackling climate change and inequality.
26. In the Strategic Themes and Actions include more information on the engagement and development timeline of the Food Growing and Allotment Strategy.

Resources

Services and support

Everyone can access:

- health enhancing, accessible, affordable and well-maintained services, facilities and amenities. These are informed by community engagement, responsive to the needs and priorities of all local people.
- a range of spaces and opportunities for communities to meet indoors and outdoors.
- information and resources necessary for an included life in a range of digital and non-digital formats.

Evidence and research:

- Services and support can provide people with a sense of belonging to the community.³¹
- Access to facilities, services and communities can also help to increase social interactions and the inaccessibility can affect certain groups disproportionately.³²
- Accessibility to services can be exacerbated by poor transport links and safety of wider environment.³³

Climate prompt

- *Don't forget to think about food security; you should consider if there is any food grown locally and how this could be supported?*
- *What else is needed locally for people to reduce the impact of their consumption? Is there recycling, repair or sharing resources nearby?*³⁴

Summary of discussion: It was noted that the positive messaging related to the importance of partnership and preventative approaches to addressing inequalities, as well as the consideration of building placement in Clackmannanshire, is included. However, there is a

³¹ [Public Health Scotland, Evidence behind Place Standard Tool and Place and Wellbeing Outcomes](#)

³² [Public Health Scotland, Evidence behind Place Standard Tool and Place and Wellbeing Outcomes](#)

³³ <https://www.transport.gov.scot/our-approach/national-transport-strategy/>

³⁴ [Place Standard Tool Place Standard Lens](#)

need for more detailed information to help explore the governance structure within Clackmannanshire Council in establishing 'Place' governance at a corporate level.

It was agreed that the role of the Climate Emergency Board and Climate Change Forums helps to fulfil the place approach in the development of the Climate Change Strategy.

Additionally, during the discussion, it was emphasised that local services across Scotland actively seek commonality in attempts to establish a framework for climate readiness. The Strategy should acknowledge this need and promote the foundation of a 'Place' directorate for bringing together local services as part of the Climate Emergency Board structure.

Complimentary to this, it was agreed that the Strategy should strongly emphasise and celebrate the pivotal role played by local Community Development Trusts and schools in spearheading local climate-related projects. This support for communities is vital for encouraging community engagement in this area.

The group agreed that there is ample relevant information about procurement but more needs to be brought out on asset management, especially when a lot of council buildings are becoming surplus to requirement because of the promotion of home working.

Recommendations to consider:

27. In the Strategic Themes and Actions, the communication about the role of place and the Climate Emergency Board and Climate Change Forums should be made clear with Climate Forums being highlighted as a key tool for engagement and information. e.g., an infographic. Show where the framework leads to in relation to behaviour change, meeting net zero targets, links to supporting documents and the current 'Place' governance gap in this framework.
28. In the Strategy and Strategic Themes and Actions include explicit mention of, and support for, the services provided by local Community Development Trusts who lead on local Climate Change and sustainable projects.
29. In the Strategy include more information on the asset management approach of Council with a message about keeping services in locations that can be easily accessed by walking.

Work and economy

Everyone benefits equally from a local economy that provides:

- essential goods & services produced or procured locally
- good quality paid and unpaid work
- access to assets such as wealth & capital and the resources that enable people to participate in the economy such as good health and education
- a balanced value ascribed across sectors such as female dominated sectors and the non-monetary economy
- the resources that enable people to participate in the economy such as good health and education.

Evidence and research:

- Experts hypothesise that if a place is lively and vibrant it can provide work opportunities and will encourage people to visit the area.³⁵
- Unemployment can be harmful to health and the longer unemployed the worse the health outcomes.³⁶
- Volunteering has been associated with improved self-rated health; mental health; decreased depression; decreased mortality, life satisfaction; and wellbeing. Volunteering can help with the undertaking of healthy behaviours such as physical activity.^[Obj]

Climate Prompts

- *Have any businesses struggled following severe weather? What could help them to cope or get up and running again?*
- *Are people able to work from home/ a local work hub if bad weather disrupts travel to a more distant workplace?³⁷*

Summary of discussion:

The group recognised that there is good consideration of circular economy in the Strategic Themes and Actions. It has positive statements about procurement, showing that is

³⁵ [Public Health Scotland, Evidence behind Place Standard Tool and Place and Wellbeing Outcomes](#)

³⁶ [Public Health Scotland, Evidence behind Place Standard Tool and Place and Wellbeing Outcomes](#)

³⁷ [Place Standard Tool Place Standard Lens](#)

important to review it against environmental standards not just lowest cost and in terms of what the council will review moving forward.

There was discussion around the need to link in more with NHS Forth Valley Anchor plan and the need for more consideration on local Child Poverty Data and how the Shaping Places for Wellbeing Alloa data profile and recommendation embedment work should guide this linkage.

The group agreed that the coverage of the development of local volunteering, green skills training, and the subsequent creation of green jobs is promising. It was suggested that more detail should be added to illustrate how each sector is integrating efforts to help individuals build routines, life skills, gain education, and secure employment, all while addressing climate change.

Specific feedback was provided regarding the impact of extreme weather conditions on individuals working from home, at home, or away from home. The suggestion was to incorporate more consideration of this aspect within the Strategic Themes and Actions, with reference to previous work on mapping digital inequalities across Clackmannanshire (by Clackmannanshire Council).

Recommendations to consider:

30. In the Strategic Themes and Actions include more explicit information about what circular economy procurement is, highlighting food procurement and the other channels of support the council will review moving forward in relation to sustainability and the wellbeing economy.
31. In the Strategic Themes and Actions include action that shows the aim to link in more with NHS Forth Valley Anchor plan and to apply local Child Poverty Data and the Shaping Places for Wellbeing Alloa data profile to strengthen a data led approach.
32. In the Strategic Themes and Actions incorporate more detail about local training and employability work that is supporting people to create routine, life skills, education and employment e.g., Forthbank up and coming skills base and renewable energy site.
33. In the Strategic Themes and Actions incorporate more education on the effects of extreme weather conditions highlighting the impact on those working from, at or away from home.

Housing and community

Everyone has access to:

- a home that is affordable, energy efficient, high quality and provides access to private outdoor space.
- a variety of housing types, sizes and tenancies to meet the needs of the community. And of a sufficient density to sustain existing or future local facilities, services and amenities.
- a home that is designed and built to meet need and demand, is adaptable to changing needs and includes accessible/wheelchair standard housing.
- new homes that are located and designed to provide high levels of climate resilience and use sustainable materials and construction methods.
- homes that are designed to promote community cohesion.

Evidence and research:

- Provision of good quality affordable housing is associated with improved physical and mental health outcomes including quality of life.³⁸
- By creating energy efficient homes, it can help with heating homes adequately and can therefore assist with reducing fuel and wider poverty, which has a positive impact on health.³⁹

Climate lens prompts

- *Are homes energy efficient, easy/cheap to heat?*
- *Are there local renewable energy or low carbon energy resources which could be used to heat or power homes? (wind, wave, rivers, forestry, solar, district heat networks)⁴⁰*

Summary of discussion:

The group agreed that there is lot of detail around social housing in the Strategic Themes and Actions. It is well outlined and links in with the developing Wellbeing Economy work in Clackmannanshire

³⁸ [Public Health Scotland, Evidence behind Place Standard Tool and Place and Wellbeing Outcomes](#)

³⁹ <https://www.instituteofhealthequity.org/resources-reports/spatial-planning-and-health-nice/>

⁴⁰ [Place Standard Tool Place Standard Lens](#)

Moving forward, there should be links to the Local Development Plan to promote a diversity of housing types. This will prevent the formation of a monoculture of residents, as it is the variety of people that truly builds thriving communities. Such diversity allows residents to stay in place and offers options for downsizing within the same area. It also discourages individuals from continuing to heat houses that are far too big for their needs. This linkage will aim to support the Local Development Plan's focus on encouraging intergenerational living through the inclusion of various housing sizes in new developments.

Recommendations to consider:

34. In the Strategic Themes and Actions mention the importance of saying no to low density housing which increases travel distances for residents and services as well as not enabling public transport to be viable.
35. In the Strategic Themes and Actions include specific links to the Local Development Plan Strategic Objectives covering housing requirements. These will also be featured within the Regional Energy Masterplan and highlight the growing need to provide housing for our aging population and showcase Living Alloa Primrose Street development as an exemplar approach.

Civic

Identity and belonging

Everyone can benefit from a place that has a positive identity, culture and history, where people feel like they belong and are able to participate and interact positively with others.

Evidence and research:

- If people are involved in helping to design and maintain the places they live in, this can build a sense of ownership, belonging and attachment.⁴¹
- People in lower income groups are less likely to report being strongly connected to their communities compared with those in higher income groups.⁴²
- A sense or feeling of belonging to a community is associated positively with mental health, and an improved quality of life.⁴³

Climate lens prompt

- *Is there a sense of belonging in the climate change initiatives? Do they feel they can participate?*⁴⁴

Summary of discussion:

The group agreed that the Climate Change Forums have been a good way to use local climate action to bring communities together. The Strategic Themes and Objectives detail the need for building on Identify and Belonging within the Forum discussions.

With the presence of five local flood resilience groups in Clackmannanshire, as well as local school and third sector initiatives aiding young people in coping with the effects of climate change, there is an opportunity for the council to establish connections with local projects that focus on climate, culture, and heritage. These collaborations will help in framing community climate action while strengthening the sense of identity and belonging in Alloa and Clackmannanshire.

⁴¹ [Public Health Scotland, Evidence behind Place Standard Tool and Place and Wellbeing Outcomes](#)

⁴² [Public Health Scotland, Evidence behind Place Standard Tool and Place and Wellbeing Outcomes](#)

⁴³ [Public Health Scotland, Evidence behind Place Standard Tool and Place and Wellbeing Outcomes](#)

⁴⁴ [Place Standard Tool Place Standard Lens](#)

Recommendations to consider:

36. In the Strategic Themes and Actions include action to link in with [Resonate Together](#) and the development of the Culture Strategy as well as with Inner Forth's current work linking heritage, community and climate action.

Feeling safe

Everyone feels safe and secure in their own home and their local community taking account of the experience of different population groups.

Evidence and research:

- Fear of crime, antisocial behaviour or crime itself can make places feel unsafe.⁴⁵
- A lack of maintenance can lead to a place feeling unsafe.⁴⁶
- A lack of maintenance can lead to a place feeling unsafe.⁴⁷
- Perceptions of place feeling unsafe can lead to negative impacts on health, for example mental wellbeing and can reduce outdoor activities⁴⁸
- There can be personal safety issues for certain groups of the population when using public transport.⁴⁹
- Some groups within the population can have limited access to safe and well-maintained environments.⁵⁰

Climate lens info

⁴⁵ [Public Health Scotland, Evidence behind Place Standard Tool and Place and Wellbeing Outcomes](#)

⁴⁶ [Public Health Scotland, Evidence behind Place Standard Tool and Place and Wellbeing Outcomes](#)

⁴⁷ [Public Health Scotland, Evidence behind Place Standard Tool and Place and Wellbeing Outcomes](#)

⁴⁸ [Public Health Scotland, Evidence behind Place Standard Tool and Place and Wellbeing Outcomes](#)

⁴⁹ Mindell JS, Watkins SJ, Cohen JM (Eds) Health on the Move 2: Policies for health promoting transport. 2011 Transport & Health Study Group, Stockport Available from http://www.transportandhealth.org.uk/wp-content/uploads/2011/02/HotM2-Cover-and-Section-I_22Feb111.pdf

⁵⁰ Bamba C, Robertson S, Kasim A, et al. Healthy land? An examination of the area-level association between brownfield land and morbidity and mortality in England. *Environment and Planning* 2014;46:433–454

- *Are there environmental or weather conditions which make this place feel unsafe? (Flooding, air quality, busy roads, ice, high winds, storm surges) ⁵¹*

Summary of discussion:

There was discussion about highlighting the need for a 'Feeling Safe' thread through the Strategic Themes and Actions to include the perspectives of those who are most vulnerable in Alloa and Clackmannanshire. It was acknowledged that well connected pathways are in place, as mentioned in the Active Travel discussion. The Strategic Themes and Actions should emphasise the importance of enhancing accessibility and safety by highlighting developments that incorporate proper lighting, while also linking this to the local project work around energy efficient street lighting.

Flood worry and flood risk is brought up spontaneously within communities in Alloa and Clackmannanshire, it is a visible concern. There are 5 flood resilience groups within Clackmannanshire and the council are supporting stronger relationships with them. The group agreed that the Strategic Themes and Actions should support the opportunity to look at learning from this activity and the role of a community climate champion initiative. This would also acknowledge the need for the council to take on a role and responsibilities to help promote everyone in the area to be feel more prepared for local flooding.

Recommendations to consider:

37. In the Strategic Themes and Actions detail more actions to improve the range of perspectives needed to guide Safety measures of sustainable and climate action work across Alloa and Clackmannanshire.
38. In the Strategic Themes and Actions include more information about the active travel related work across sectors in Clackmannanshire that is considering the Place and Wellbeing Outcomes e.g., regarding 'Feeling Safe' and the input of lighting on cycle path Alva to Menstrie and upgrading of local streetlights.
39. In the Strategic Themes and Actions include explicit action on how the council and other sectors should support the flood resilience groups. This support should include facilitation of shared learning, sourcing specialised training provision and exploring the role of a community climate champion initiative.

⁵¹ [Place Standard Tool Place Standard Lens](#)

Stewardship

Care and maintenance

Everyone has access to:

- buildings, spaces and routes that are well cared for in a way that is responsive to the needs and priorities of local communities.
- good facilities for recycling and well organised refuse storage and collection.

Evidence and research:

- Care and maintenance include neighbourhood/environmental incivilities such as litter, vandalism and dog fouling.⁵²
- Poorly maintained neighbourhoods with high levels of incivilities can lead to lower levels of mental wellbeing and poor health.⁵³
- If a place is not well maintained this can lead to negative perceptions of a place, which can lead to investors disinvesting and people not wanting to go to that place.⁵⁴

Climate lens info

- *How do local buildings and infrastructure cope with climate today? Are repairs carried out quickly?*
- *Has there been damage or increased maintenance due to the weather?*⁵⁵

Summary of discussion:

The participants highlighted the opportunity to investigate participatory budgeting, particularly in the context of maintenance, recycling, and hybrid maintenance plans related

⁵² [Public Health Scotland, Evidence behind Place Standard Tool and Place and Wellbeing Outcomes](#)

⁵³ World Health Organization. Environmental health inequalities in Europe. Second assessment report. Geneva: WHO; 2019.

www.euro.who.int/en/publications/abstracts/environmental-health-inequalities-in-europe.-second-assessment-report-2019

⁵⁴ Jones R, Heim D, Hunter S, et al. The relative influence of neighbourhood incivilities, cognitive social capital, club membership and individual characteristics on positive mental health. *Health & Place* 2014 28: 187-193
Stantec on behalf of the Scottish Land Commission. Vacant and derelict land in Scotland assessing the impact of vacant and derelict land on communities; 2019

⁵⁵ [Place Standard Tool Place Standard Lens](#)

to climate action efforts. It was also suggested that this work should expand beyond the sole responsibility of the Council, and there's valuable learning to be gleaned from third sector groups that incorporate community and building maintenance into everyday service action plans.

The potential for mentioning corporate volunteering opportunities and linking this in with young people's groups was highlighted, suggesting that local businesses could be partners in promoting climate action directly related to climate care and maintenance. In summary, the discussion revolved around the Strategic Themes and Actions fostering collaboration, trust, and inclusive community engagement to achieve positive outcome.

Recommendations to consider:

40. Include in the Strategic Themes and Actions, show learning from third sector, youth services and community justice/community payback groups work already having a positive influence on community maintenance and the opportunity learn from their work and further potential partnership work.
41. If considering Participatory Budgeting, in the Strategic Themes and Actions showcase learning from other community choices projects and that support will be sought to facilitate this process.

Influence and sense of control

Everyone is empowered to be involved a place in which:

- Local outcomes are improved by effective collaborations between communities, community organisations and public bodies.
- Decision making processes are designed to involve communities as equal partners.
- Community organisations co-produce local solutions to issues.
- Communities have increased influence over decisions.
- Democratic processes are developed to be accessible to all citizens.

Evidence and research:

- People on lower incomes tend to have a lower sense of control compared to people on higher incomes.⁵⁶
- A sense of control can lead to more empowerment and a sense of purpose.⁵⁷
- People living in more socioeconomically deprived areas can feel less confident about being involved in decision-making compared to less deprived areas.⁵⁸
- Those with a long-term health condition or disability can feel less empowered in decisions about their neighbourhood.⁵⁹

Climate lens prompt

- *Is there a positive vision for the community's future? Does it include what the place may look like because of climate change?*⁶⁰

Summary of discussion:

The discussion covered various aspects of community engagement and partnership working within the context of the Strategic Themes and Actions. There is ample coverage of the

⁵⁶ [Public Health Scotland, Evidence behind Place Standard Tool and Place and Wellbeing Outcomes](#)

⁵⁷ Bell R. Psychosocial pathways and health outcomes: Informing action on health inequalities. London: Public Health England/UCL Institute of Health Equity; 2017. www.instituteoftheequity.org/resources-reports/psychosocial-pathways-and-health-outcomes-informing-action-on-health-inequalities

⁵⁸ Whitehead M, Pennington A, Orton L, et al. How could differences in 'control over destiny' lead to socio-economic inequalities in health? A synthesis of theories and pathways in the living environment. *Health & Place* 2016 39: 51-61

⁵⁹ [Public Health Scotland, Evidence behind Place Standard Tool and Place and Wellbeing Outcomes](#)

⁶⁰ [Place Standard Tool Place Standard Lens](#)

potential for nurturing stronger relationships with local community groups and the third sector. During the discussion, there was a notable emphasis on the significance of actively promoting collaborative partnerships between the Council and these vital community organisations.

It was agreed that there should be a more explicit focus on promoting collaboration and emphasis on the importance of partnership working in the context of climate action initiatives. This approach should draw upon lessons learned from existing third sector initiatives, with the goal of reaching as many groups as possible throughout Alloa and Clackmannanshire. The group acknowledged that there could be role for Participatory Budgeting to support this action.

The group reached a consensus that the concept of 20-minute neighbourhoods is adequately covered in the Strategy, primarily in relation to travel. However, it was suggested that the Strategic Themes and Actions should also acknowledge the role of 20-minute neighbourhoods in enhancing access, equity, and contributing to the Place and Wellbeing Outcomes.

Recommendations to consider:

42. Using accessible language in the Strategic Themes and Actions detail clear actions to support a collaborative approach emphasising the value of partnership working related to climate action. As part of these actions refresh links to Clackmannanshire Third Sector Interface and Community Councils through the further Climate Forum development.
43. Using accessible language in the Strategic Themes and Actions explain the benefits of 20-minute neighbourhoods showing further learning from [Climate xchange](#).
44. Extend the Strategy's commitment to participatory budgeting, as per the Scottish Government's ambition referenced earlier in the Strategy. Begin to identify possible areas where a participatory budgeting approach could be used.

Appendix 1: Participants

- Laura Stewart – Shaping Places for Wellbeing Programme
- Theresa Glasgow – Shaping Places for Wellbeing Programme
- Irene Beautyman – Shaping Places for Wellbeing Programme
- Sarah Rodway Swanson – Shaping Places for Wellbeing Programme
- Lawrence Hunter – Clackmannanshire Council
- Joanne Osuilleabhain – NHS Forth Valley
- Clara Walker - Forth Environment Link
- Toby Wilson – RSPB (Royal Society for the Protection of Birds) Scotland
- Stuart Guzinski- Clacks Good Food, Forth Environment Link

Appendix 2: Recommendations Table

Place and Wellbeing Outcome	Theme	Recommendation	
Movement	Active Travel	1	In the Strategic Themes and Actions make it explicit that there is action needed to improve local accessibility to active travel needs. Provide hooks to encourage stakeholders to identify any gaps in existing networks and show clear links and alignment with other strategic plans to move forward with this.
		2	In the Strategic Themes and Action include more information about the active travel related work across sectors in Clackmannanshire that is considering the Place and Wellbeing Outcomes e.g., ‘Feeling Safe’ and the input of lighting on cycle path Alva to Menstrie and ‘Work and Economy’ and the local employability programmes from Clackmannanshire Council and Clackmannanshire Regeneration Trust .
		3	In the Strategy and Strategic Themes and Actions include text to further recognise the role of local schools, Alloa Active Travel Hub , Forth Environment Link and other local third sector initiatives like Resonate Together in promoting active travel.

		4	As a hook, in the Strategic Themes and Actions include clear messaging about the education and support needed for positive behaviour change around active travel that will make a real difference to people and place.
		5	In the Strategy include more explicit information of the <u>Triple Win</u> showing more information on place-based approaches around sustainability.
		6	To promote the multi- disciplinary approach required to deliver on the Place and Wellbeing Outcomes include clear links to strategic policy, plans across sectors e.g., NHS Forth Valley Health and Strategic Plans, Clackmannanshire Council Local Development Plan, and Local Outcomes Improvement Plan, <u>Clackmannanshire and Stirling Health and Social Care Partnership Strategic Commissioning Plan</u> and <u>NHS Forth Valley Climate Change Strategy</u> .
	Public Transport	7	In the Strategic Themes and Actions detail more actions to improve the range of perspectives needed to guide how the accessibility of public sustainable transport is developed to include most vulnerable across Alloa and Clackmannanshire.
		8	In the Strategic Themes and Actions include clear messaging about the links to the accessibility of active travel and public transport supporting people to engage for a social purpose, not only for a functional purpose. Link in with Dial-a- Journey to learn from their data and approach to this.

		9	In the Strategy show clear learning from and connection to local groups like the Forth Valley Connectivity Commission and existing organisations who are guiding sustainable work and currently operating in the Clackmannanshire and Forth Valley areas.
		10	In the Strategic Themes and Actions show more detailed information on the other Clackmannanshire Council strategies and plans that are directly related to sustainable development e.g., Public Transport Strategy, Active Travel work. Outline the benefits of the role of Place and Wellbeing Assessments would have during their review.
		11	In the Strategic Themes and Actions show learning from digital climate solutions mechanism to support transport timetabling accessibility and explore links with Clackmannanshire Council Digital Strategy.
	Traffic and Parking	12	In the Strategic Themes and Actions include more messaging to show the importance of improving infrastructure around schools and communities. This will encourage walking and wheeling that is safe and accessible and the means to achieving this being Low Traffic neighbourhoods around schools. Show links to the Alloa Town Masterplan and Clackmannanshire Local Development Plan.
		13	In the Strategic Themes and Actions show learning from the impact of other Low Traffic neighbourhoods across Scotland e.g., A Guide to Low Traffic Neighbourhoods .
Spaces	Streets and Spaces	14	In the Strategic Themes and Actions insert more text that explicitly describes how streets and spaces including School occupied land and natural spaces are not separate entities and that they are interlinked. This should reference the same messaging in the Local Development Plan and Pollinator Strategies.

		15	In the Strategy promote the need for designing streets and spaces around the accessibility needs of local people and biodiversity activity.
		16	In the Strategy comprise a section about sustainability funding signposting as a hook for community groups and organisations to refer to and are encouraged to seek funding because it is detailed in the Strategy.
		17	In the Strategic Themes and Actions incorporate information around how communities can access land including streets and spaces and link this to the Food Growing and Allotment Strategies.
	Natural Spaces	18	In the Strategic Themes and Actions incorporate more messaging about the links between Natural Spaces to health and wellbeing to show that more accessible, safe, available and protected quality green spaces have a positive wellbeing effect on people and climate. This will help create a better referral route for local mental health services and Community Link Workers who are based in local GP surgeries and signpost eco school's framework to support schools.
		19	In the Strategic Themes and Action encompass messaging on the social factors of (natural space) accessibility as well as the physical factor and show commitment to tackling 'eco anxiety.'

		20	In the Strategy show an explicit acknowledgement of the council requirement to produce Nature Networks and show a clearer steer to what biodiversity enhancements the council aim to deliver tying in with pollinator corridors, Local Development Plan and Wellbeing Local Outcomes Improvement Plan.
		21	In the Strategic Themes and Actions incorporate explicit promotion of the key role of Countryside Rangers and third sector organisations in local natural space, their commitment to inequality groups and incorporating cultural activity in natural spaces as a tool to engage about climate change.
	Play and Recreation	22	In the Strategic Themes and Actions integrate an explicit explanation that Food Growing does not happen in isolation and that there are strong links to show between the Pollinator Strategy and other nature and Wellbeing Economic Strategy delivery work.
		23	In the Strategy include a section around the role of community asset transfer, as there are opportunities to support the development of new community gardening on council land, with a steer towards making the process attractive and accessible.
		24	In the Strategy showcase the exemplary work of the 'Forth Bank' project detailed in the Regional Energy Masterplan supporting more education about the Stirling and Clackmannanshire City Region Deal and the Alloa based Scottish International Environmental Centre investment and innovation initiative.
		25	In the Strategic Themes and Actions Show learning from climate neighbourhood projects like Glasgow Liveable Neighbourhoods Toolkit and Creative Climate Futures in relation to exploring creative climate change

			engagement activities with communities together to use play and recreational spaces as a way of tackling climate change and inequality
		26	In the Strategic Themes and Actions include more information on the engagement and development timeline of the Food Growing and Allotment Strategy.
Resources	Services and Support	27	In the Strategic Themes and Actions, the communication about the role of place and the Climate Emergency Board and Climate Change Forums should be made clear with Climate Forums being highlighted as a key tool for engagement and information. e.g., an infographic. Show where the framework leads to in relation to behaviour change, meeting net zero targets, links to supporting documents and the current 'Place' governance gap in this framework
		28	In the Strategy and Strategic Themes and Actions include explicit mention of, and support for, the services provided by local Community Development Trusts who lead on local Climate Change and sustainable projects.
		29	In the Strategy include more information on the asset management approach of Council with a message about keeping services in locations that can be easily accessed by walking
	Work and Economy	30	In the Strategic Themes and Actions include more explicit information about what circular economy procurement is, highlighting food procurement and the other channels of support the council will review moving forward in relation to sustainability and the wellbeing economy.

		31	In the Strategic Themes and Actions include action that shows the aim to link in more with NHS Forth Valley Anchor plan and to apply local Child Poverty Data and the Shaping Places for Wellbeing Alloa data profile to strengthen a data led approach
		32	In the Strategic Themes and Actions incorporate more detail about local training and employability work that is supporting people to create routine, life skills, education and employment e.g., Forthbank up and coming skills base and renewable energy site.
		33	In the Strategic Themes and Actions incorporate more education on the effects of extreme weather conditions highlighting the impact on those working from, at or away from home
	Housing and Community	34	In the Strategic Themes and Actions mention the importance of saying no to low density housing which increases travel distances for residents and services as well as not enabling public transport to be viable.
		35	In the Strategic Themes and Actions include specific links to the Local Development Plan Strategic Objectives covering housing requirements. These will also be featured within the Regional Energy Masterplan and highlight the growing need to provide housing for our aging population and showcase Living Alloa Primrose Street development as an exemplar approach.

Civic	Identity and Belonging	36	In the Strategic Themes and Actions include action to link in with Resonate Together and the development of the Culture Strategy as well as with Inner Forth’s current work linking heritage, community and climate action.
	Feeling Safe	37	In the Strategic Themes and Actions detail more actions to improve the range of perspectives needed to guide Safety measures of sustainable and climate action work across Alloa and Clackmannanshire.
		38	In the Strategic Themes and Actions include more information about the active travel related work across sectors in Clackmannanshire that is considering the Place and Wellbeing Outcomes e.g., regarding ‘Feeling Safe’ and the input of lighting on cycle path Alva to Menstrie and upgrading of local streetlights.
		39	In the Strategic Themes and Actions include explicit action on how the council and other sectors should support the flood resilience groups. This support should include facilitation of shared learning, sourcing specialised training provision and exploring the role of a community climate champion initiative.

Stewardship	Care and Maintenance	40	Include in the Strategic Themes and Actions, show learning from third sector, youth services and community justice/community payback groups work already having a positive influence on community maintenance and the opportunity learn from their work and further potential partnership work
--------------------	-----------------------------	----	--

		41	If considering Participatory Budgeting, in the Strategic Themes and Actions showcase learning from other community choices projects and that support will be sought to facilitate this process.
	Influence and Control	42	Using accessible language in the Strategic Themes and Actions detail clear actions to support a collaborative approach emphasising the value of partnership working related to climate action. As part of these actions refresh links to Clackmannanshire Third Sector Interface and Community Councils through the further Climate Forum development.
		43	Using accessible language in the Strategic Themes and Actions explain the benefits of 20-minute neighbourhoods showing further learning from Climate xchange .
		44	Extend the Strategy's commitment to participatory budgeting, as per the Scottish Government's ambition referenced earlier in the Strategy. Begin to identify possible areas where a participatory budgeting approach could be used.

Appendix 3 Qualitative Data Infographic



Alloa – what we're hearing in our communities

As part of the Shaping Places for Wellbeing Programme's data exercise, the Community Link Leads in each town have been connecting with local communities, community organisations and practitioners working locally.

A comprehensive quantitative data exercise has already indicated that some groups in Alloa face particularly significant inequalities. Those groups are: people experiencing deprivation in Alloa South and East; people with problem substance use involving alcohol; people experiencing poverty with a focus on children; and people experiencing ill health and dying prematurely.

This exercise aims to bring the above data to life, and understand Alloa residents' experience of the place they live, work and relax. The information gathered will be fed into Steering Group meetings and [Place and Wellbeing Assessments](#), and be continually reviewed for the duration of the Programme.



This infographic summarises some of the key things we're hearing as they relate to the [Place and Wellbeing Outcomes](#).

People are central to the Outcomes. The principles of equality, net-zero emissions and sustainability underpin all of these themes.

You can find out more about the quantitative data profile [here](#). You will be able to read more, including the process for identifying the ideas captured in this infographic, in a report to be published soon.

Sept 2023



Mental health is a priority that we have limited data on. Carers are a hidden group, often with unique and high need. "Generational cycles" of trauma and behaviour exist in many families and communities.



Poor connectivity and public transport links between Alloa and other hubs in the region, like Stirling or Falkirk.

"Due to having to use more than one bus and trying to tie up the bus times, this can often result in long waits for people, often standing in miserable weather, it is very time consuming and the journey will take longer than the actual appointment or visit." – Clackmannanshire resident



Green space is abundant and valued, but care and use of space could be improved.

Flood risk is a worry for some residents.

Cost is a frequent barrier to accessing leisure opportunities, including **volunteering**, especially since the cost of living crisis.



Lack of service provision can be frustrating, particularly when compared to other regions.

De-centralised local services are needed.

Services need to be more flexible, responsive and joined up to avoid people falling through the cracks.

Inaccessible services can deepen inequality.

Unemployment/low employment opportunities is an issue.

Insecure housing needs to be addressed.

"You can no longer walk in to speak to someone about a concern. What if people don't have access to a phone to book an appointment?" – resident

Civic
 identity and belonging
 Feeling safe

Good community spirit, but division between some neighbourhoods.

Sense of fatalism for some – an expectation across generations that things will not change.

Violence is a daily reality for some.

Minoritised communities can feel unsafe.

"Parents are stopping their children from playing together because they live in 'less desirable' areas." - Alloa resident and parent

"We won't hold hands in certain areas within Clackmannanshire/Alloa. It isn't safe for us to show that we are together locally." - lesbian couple.

Stewardship
 Care and maintenance
 Influence and control

Community and third sector initiatives are strong, but do not always feel valued by statutory services.

Disheartened by consultation processes – people not feeling their input is meaningful and choosing to disengage.

They prefer to keep themselves separate from the discussion as they don't want to get their hopes up for change. - members of community group

Shared learning

Across the seven Shaping Places for Wellbeing project towns, we've identified some shared messages about ways of working:

- Communities value joint working and partnership approaches.
- Communities want strong and consistent communication from and between all stakeholders.
- Collective decision making by all stakeholders will strengthen partnerships.

"Who better to help solve problems and issues within communities than the local people." - Alloa resident and group leader

Appendix 4 An Example of previous Recommendation Embedment

Recommendation Themes	Recommendation	<u>The How</u> <u>Conditions for Change and New ways of thinking</u>	Shaping Places for Wellbeing Short/Medium Outcomes
Stewardship 'Care and Maintenance'	A/CC/25 Continue to involve the community in the strategy and link in with any local groups.	<p><u>Buy in from the officers to receive support</u></p> <p><u>Relationship building activity interwoven</u> into embedment support actions.</p> <p>Our team and the officer had an <u>open and willing approach</u> to discuss the best ways to support to compliment / not add to workload initially and considered timetable of availability to plan meetings.</p> <p><u>Regular meeting time</u> - making time to meet to allow healthy <u>ruminatio</u>n and important check ins to discuss steps of work and allow time to share ideas on relationship building.</p> <ul style="list-style-type: none"> • We <u>prioritised recommendation</u> areas that seemed to be in practise already • that helped describe actions and the reasons behind some actions that were already considered in the workplan • or to be incorporated into the strategy (which was already innovative and forward thinking) 	<p>Short term learning: Clarity on the positive impact of the Place and Wellbeing Outcomes have on people planet and equity</p> <p>Short term learning: The value of understanding local project towns inequalities when making decisions</p> <p>Short term learning: Decision makers are considering unintended impacts if plans and proposals on place and those who use it</p> <p>Short term learning: Place and Wellbeing Assessments activate new ways of place-based working that improves wellbeing and reduces inequality</p> <p>Medium term 'changing action':</p>

		<p>Once proposal accepted our support looked like:</p> <p>Monthly Sounding board conversations took place from July2022 – March2023 for the officer and our team to explore further ideas, discuss advice about approaches and agree/discuss to a certain extent depending on what was being discussed, his next steps and who to contact/what links to make to move forward.</p>	<p>Increased number of plans and proposals developed using Place and wellbeing lens</p> <p>Medium term 'changing action': Effective place-based action grows using Place and Wellbeing Assessment Process</p> <p>Medium term 'changing action': Good practise continued, reviewed, developed, and shared.</p> <p>Medium term 'changing action': Ongoing use of local data profiles enhances diversity of people involved in decision making</p>
<p>Stewardship</p> <p>'Influence and Control'</p>	<p>A/CC/26</p> <p>Continue to encourage community involvement in the early stages of the strategy and any planned work</p>	<p>This was discussed in the sounding board conversations, and it was agreed and was incorporated into the strategy plans.</p> <p>We encouraged this idea, by mentioning it explicitly and encouraged understanding of the importance of varying stages in community involvement</p> <p>..and how to do this in creative, safe ways e.g., the use of design thinking techniques, anonymous contributions, and forums. This was discussed in the sounding board conversations, and it was agreed some ideas were incorporated into the strategy community engagement plans.</p>	<p>Medium Term 'changing action' Good practise for meaningful engagement widely implemented</p>

		We were able to attend the resulting Climate Change Forum in March to support the group's work and share information about the Shaping Places Programme.	
--	--	--	--