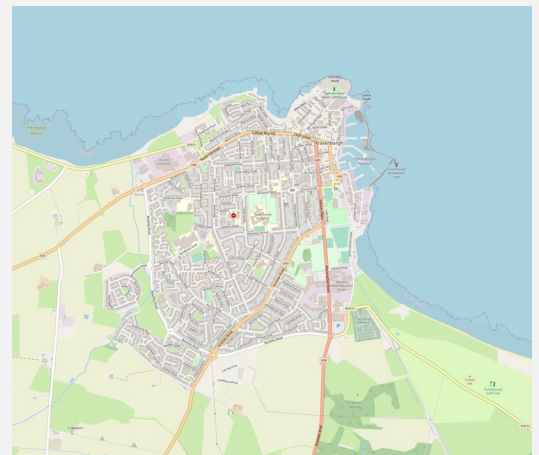




Project Town Fraserburgh – Inequalities Data

The Shaping Places for Wellbeing Programme is a 3-year programme which is being delivered by Public Health Scotland and the Improvement Service jointly with local authorities and local NHS boards. In Aberdeenshire, this work is embedded within the Local Authority and supported by the Health and Social Care Partnership.

The ambition of the programme is to improve Scotland's wellbeing by reducing significant inequality in the health of its people while addressing the health of our planet. This infographic highlights the key insights from a comprehensive data exercise to understand the most significant inequalities experienced by the most deprived population of Fraserburgh.



About Fraserburgh

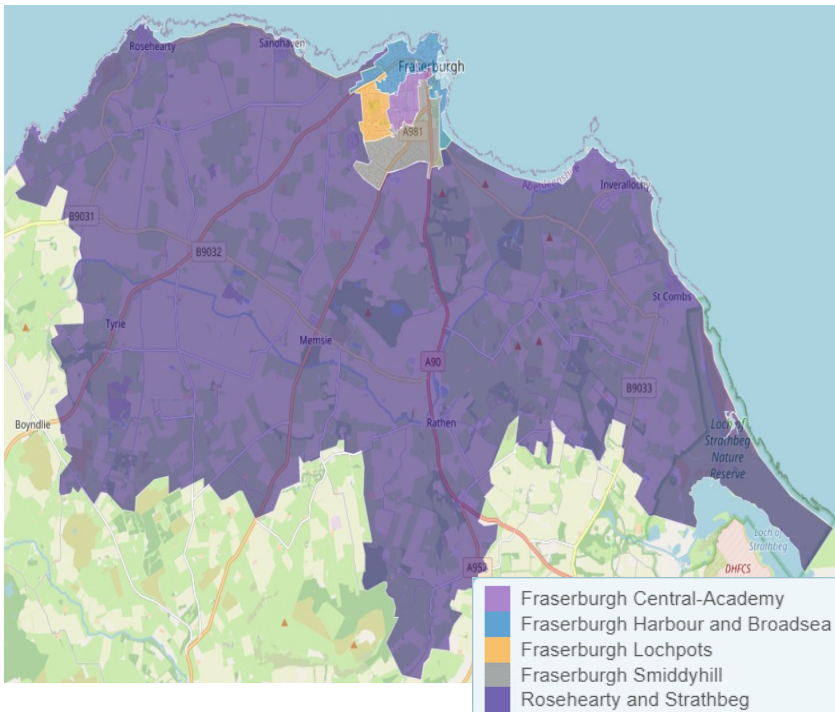
Fraserburgh is the most north easterly town in Aberdeenshire. It is a coastal town, with a large fishing port that provides the backbone for the town's heritage and economy. Fraserburgh incorporates five intermediate zones for the purpose of this resource (4 zones in the town and 1 in the surrounding area)



Appx 18,500

people live in Fraserburgh
(appx 13,000 in main town)

Main areas of inequality



1

Poverty

2

Substance Use

3

Police Interventions

4

Mental Health

5

Access to services

Data limitations

- Population size limits what can be shared without disclosure
- Primary care data not always available
- Some measures not available through national databases e.g. wait times
- Data doesn't include 2022 census information

Data sources used

ScotPHO
National Records
Scotland
Improvement Service
Profiles
Scottish Government
DWP Stat Xplore
SIMD

Profile produced in 2023 using data sources between 2017 and 2022. Includes recent updates where available. Data points indicated in brackets.

1

Poverty

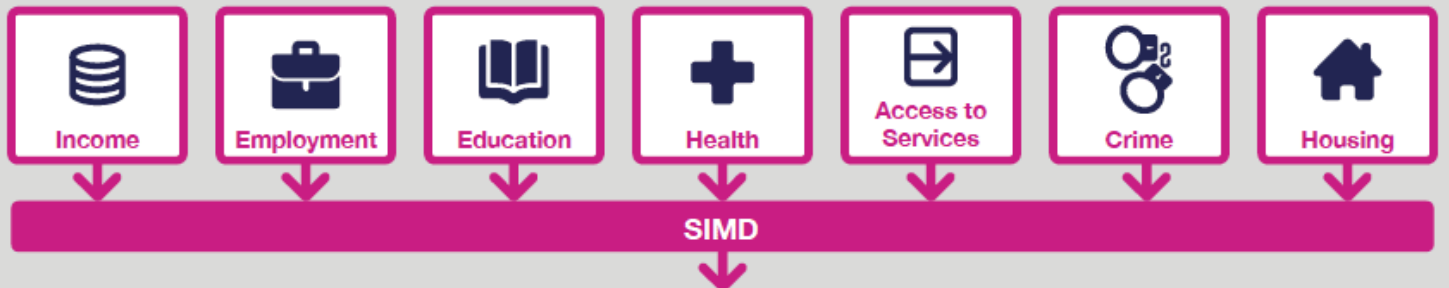
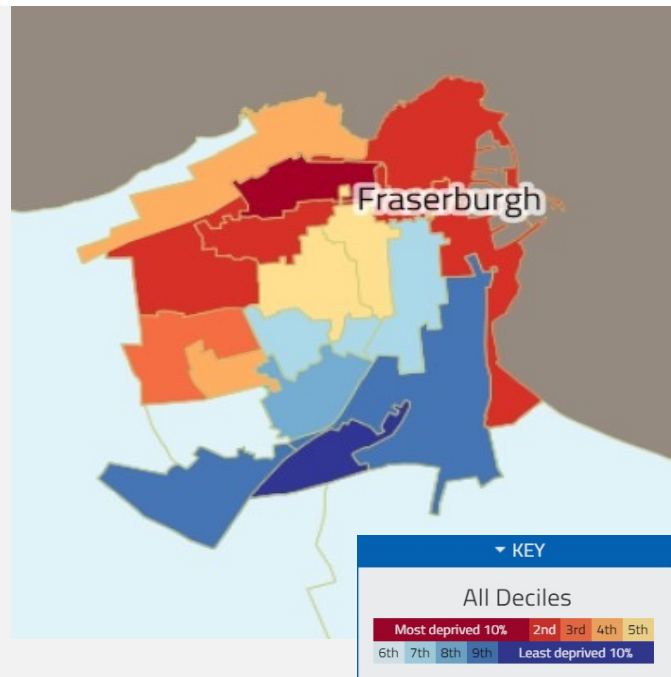
The percentage of the population living in the most deprived Scottish Index of Multiple Deprivation (SIMD) quintile varies between intermediate zones:

- 75% in Harbour & Broadsea
- 44% in Lochpots
- 19% in Central Academy
- 0% in Smiddyhill
- 0% Rosehearty & Strathbeg

3% Aberdeenshire average

20% Scottish Average

(2021)



Harbour & Broadsea has 25% of the population in receipt of out of work benefits.

Aberdeenshire (10%)

Scottish (16%)

(May 2021)

Percentage of children reported to be living in poverty

- 23% Harbour & Broadsea
- 22% Lochpots

Aberdeenshire average of 10%
Scottish average of 15%.

(2020/2021)

The rate of people on Universal Credit

- Harbour & Broadsea (213)
- Lochpots (184)
- Central Academy (116)

Aberdeenshire rates (66)

Scottish rates (102)

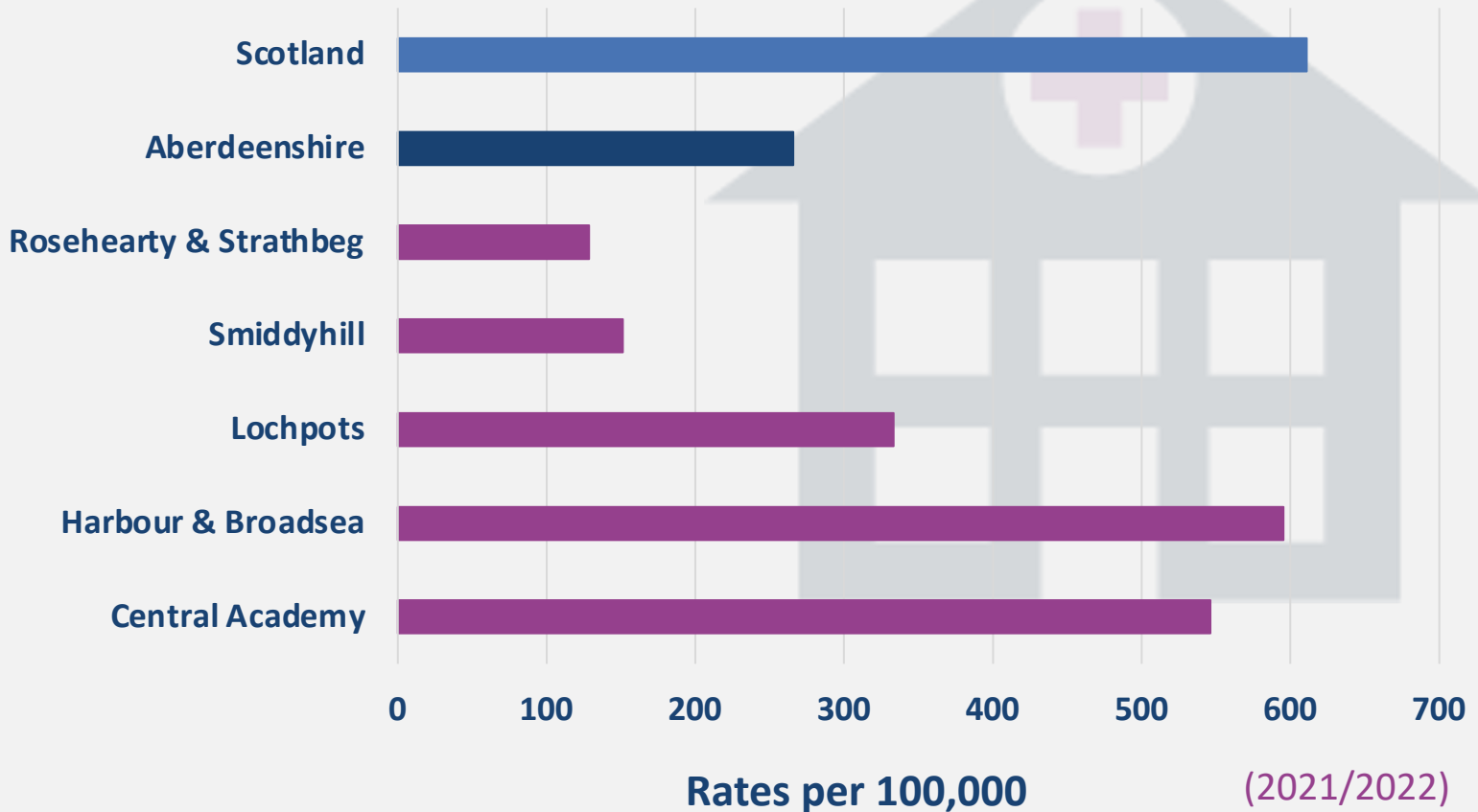
(per 1000 16+ population)

(October 2022)

2

Substance use

Alcohol related hospital admissions



Provision of alcohol outlets varies across intermediate zones. Greatest number of outlets

Harbour & Broadsea (7)
Aberdeenshire average (2)

(per 1000 persons)

The number of tobacco outlets varies across intermediate zones. Greatest rates

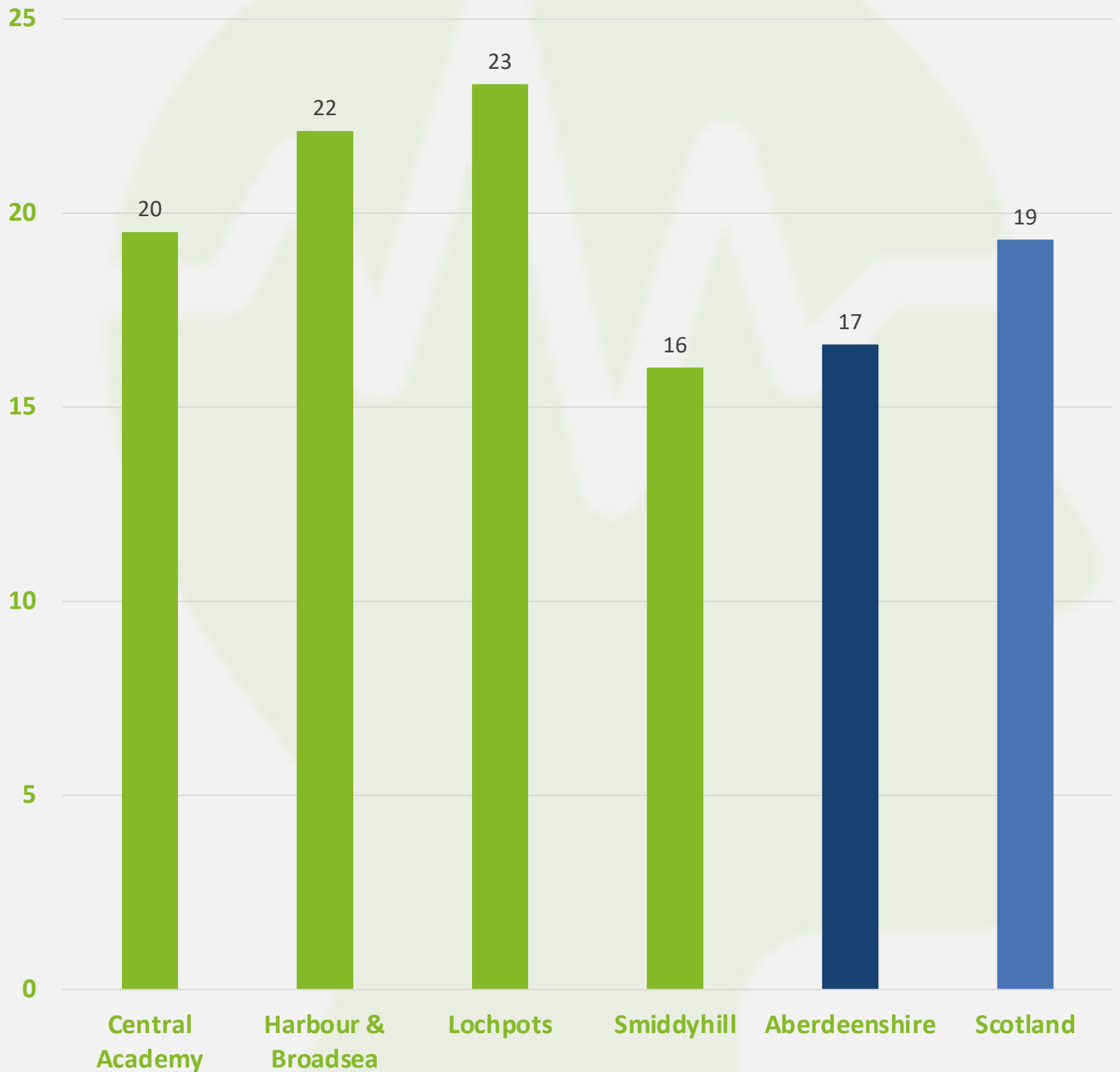
Harbour & Broadsea (4)
Aberdeenshire average (1)

(per 1000 persons)

3

Mental health

Percentage of Population being Prescribed Drugs for Anxiety, Depression or Psychosis

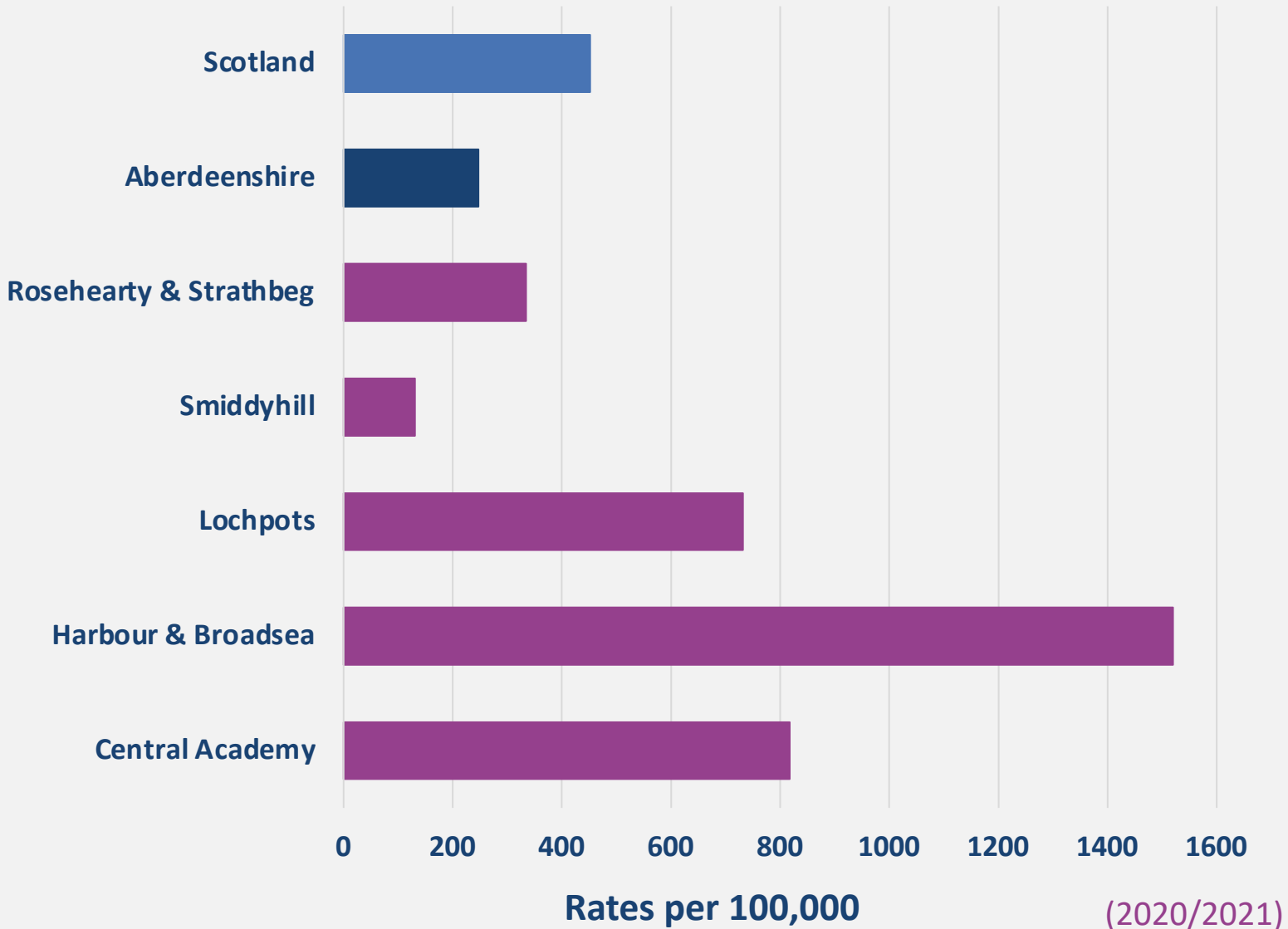


(2020/2021)

4

Police interventions

Crime Rate



The **Top 5 Recorded Types of crime** in Fraserburgh and District Multi Member Ward between April – June 2023 were:

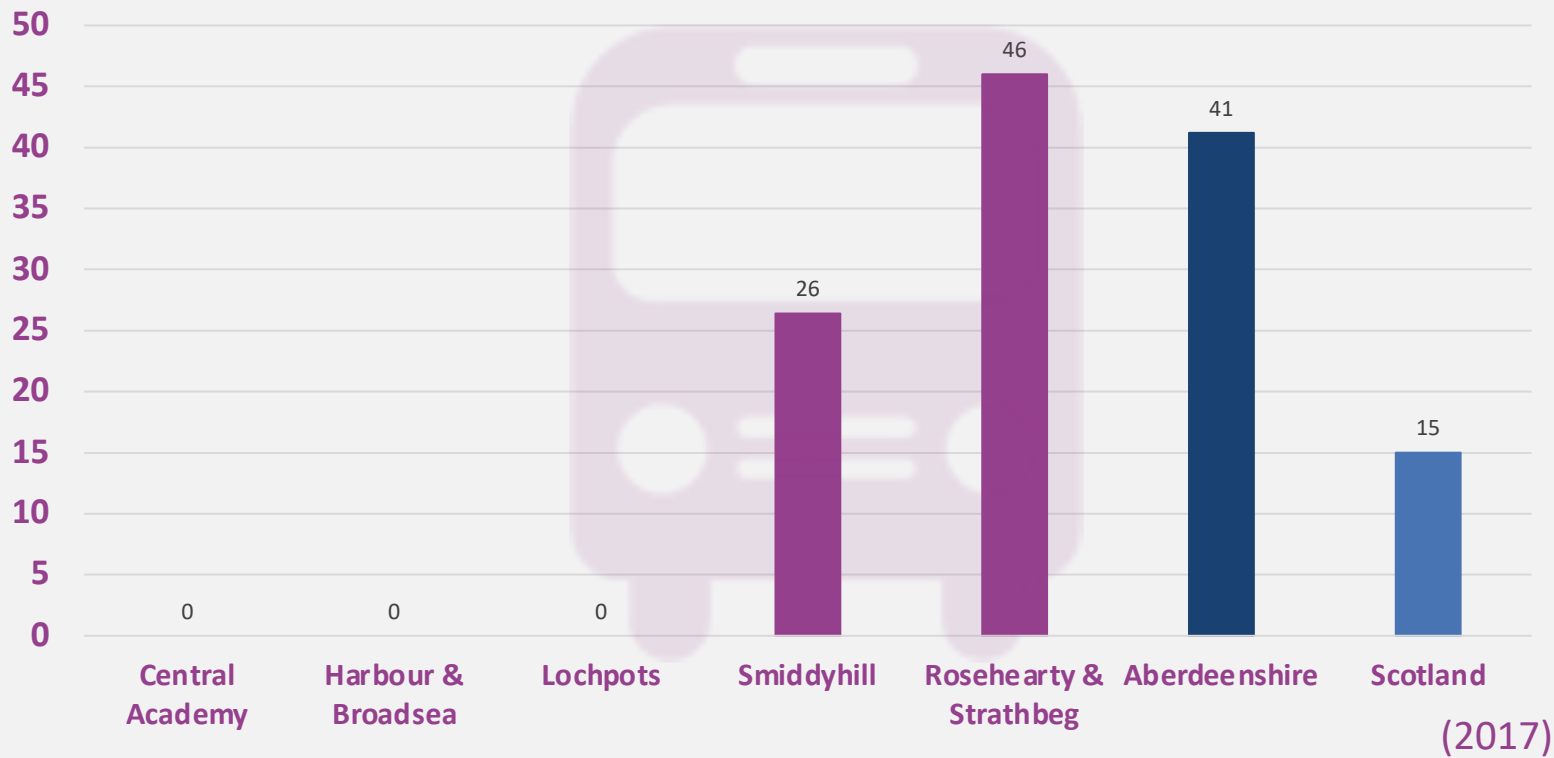
1. Common Assault (11%)
2. Theft by shoplifting (10%)
3. Vandalism (10%)
4. Possession of drugs (9%)
5. Threatening and abusive behaviour (8%)

(percentage of total crime recorded)

5

Access to services

Percentage of People Living in the 15% most 'access deprived' areas



The travel time to a GP practice by public transport varies between intermediate zones.

- Rosehearty & Strathbeg 23 minutes
- Smiddyhill 10 minutes

Aberdeenshire average 14 minutes Scottish average 10 minutes

(2021)

Only 3% of the population in Rosehearty & Strathbeg have access to Healthy Food Outlets within 800m (average 10-minute walk)
Aberdeenshire (30%)

(2021)

Additional Information

Additional data points have been identified as being of importance for consideration within Fraserburgh.

- Rate (per 100,000) of COPD admissions in Harbour & Broadsea (350) are 3 times higher than Aberdeenshire (117) and almost 3 times higher than Smiddyhill (160).

(2019/20 – 2021/22)

- Lochpots and Central Academy have a rate of Coronary Heart Disease hospitalisations twice that of Smiddyhill and Strathbeg.

(2019/20 – 2021/22)

- Aside from Central Academy (73), the rate of Deaths aged 15-44 (per 100,000) are above Scotland rate (117) with the rate in Harbour & Broadsea (316) over three times Aberdeenshire rate (94).

(2019 - 2021)

- 23% of First time Mothers in Harbour & Broadsea are under 19 years old, compared to 7% in Scotland and 4% in Aberdeenshire.

(2016/17 – 2018/19)

Qualitative data

This data was the starting point for identifying inequalities in Fraserburgh and is complemented by a qualitative data profile that brings a deeper understanding of the experiences of inequalities within the communities in Fraserburgh.

